

# KW452

Weather Cab





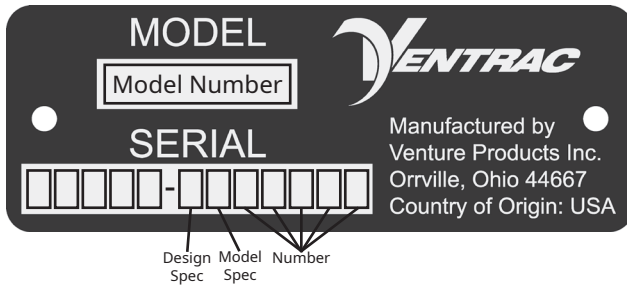
500 Venture Drive  
Orrville Oh 44667  
www.ventrac.com

View all manuals

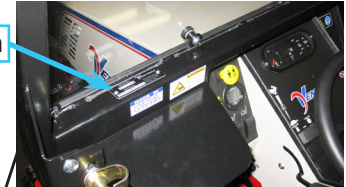


Visit [ventrac.com/manuals](http://ventrac.com/manuals) for the latest version of this parts manual. A downloadable operator's manual is also available.

### Serial Number Description



Serial Plate Location



### Notes

- If any component requires replacement, use only original Ventrac replacement parts.
- When ordering new components, be sure to order all required safety decals. All current safety decals must be affixed to the replacement components prior to installation of the component.

# TABLE OF CONTENTS

---

<b>PARTS</b>	<b>PAGE 4</b>
Wiring Diagram Reference Key.....	4
Wiring Diagram .....	5
Wire Harness & Fuse Panel.....	6
Cab Frame & Mount.....	8
Cab Roof Mount.....	10
Main Switch Panel, Cover Plates, & Components .....	12
Front & Rear Work Lights.....	14
Canvas Bellows & Column Covers .....	16
Front Windshield & Windshield Wiper.....	18
Upper Door Frame & Latch .....	20
Lower Door.....	22
Left Rear Window.....	24
Rear Window.....	26
Right Rear Window .....	28
Right Front Window / Emergency Exit .....	30
Lower Right Window .....	32
Four Point Seatbelt .....	34
Fuel Tank Cover, Frame Seals, Decals .....	36
70.2006-6 Defrost Fan Kit.....	38
70.2006-4 Mirror Kit .....	40
70.8162 Cab Hazard Lights Kit .....	42
70.8161 Strobe Light Kit.....	44
70.8148 Windshield Washer Kit.....	46
70.8160 Console Fan/Heater Kit.....	48
Heater Blower Assembly .....	50
70.8136 Kubota Heater Install Kit for 4500Y & 4500Z .....	52
70.8137 Kawasaki Heater Install Kit for 4500P.....	54
70.4146 Radiator Baffle 4500Y Kit.....	56
70.4147 Radiator Baffle 4500Z Kit.....	58

# PARTS

## Wiring Diagram Reference Key

### Wire Reference Key

#### Harness Section Identifier

= 32.0175 - Harness, Windshield Washer  
V = 32.0168 - Harness, Wire Cab (Common Harness)  
W = 32.0169 - Harness, Wire KW452 Supply  
X = 32.0170 - Harness, Wire LW452 Supply  
Y = 32.0174 - Harness, Wire Heater Kit  
Z = 32.0176 - Harness, Wire Hazard

#### Wire Color & Circuit Type

Black = Ground  
Red = Secondary Power  
White = Primary Power  
Yellow = Light/Hazard

----- = \*Black Wire  
----- = White Wire  
|||----- = Ground  
● = Splice or Connection

\* All black wires that are part of the wire harness are part of the ground circuit. However, some components such as lights may be wired where black may be positive.

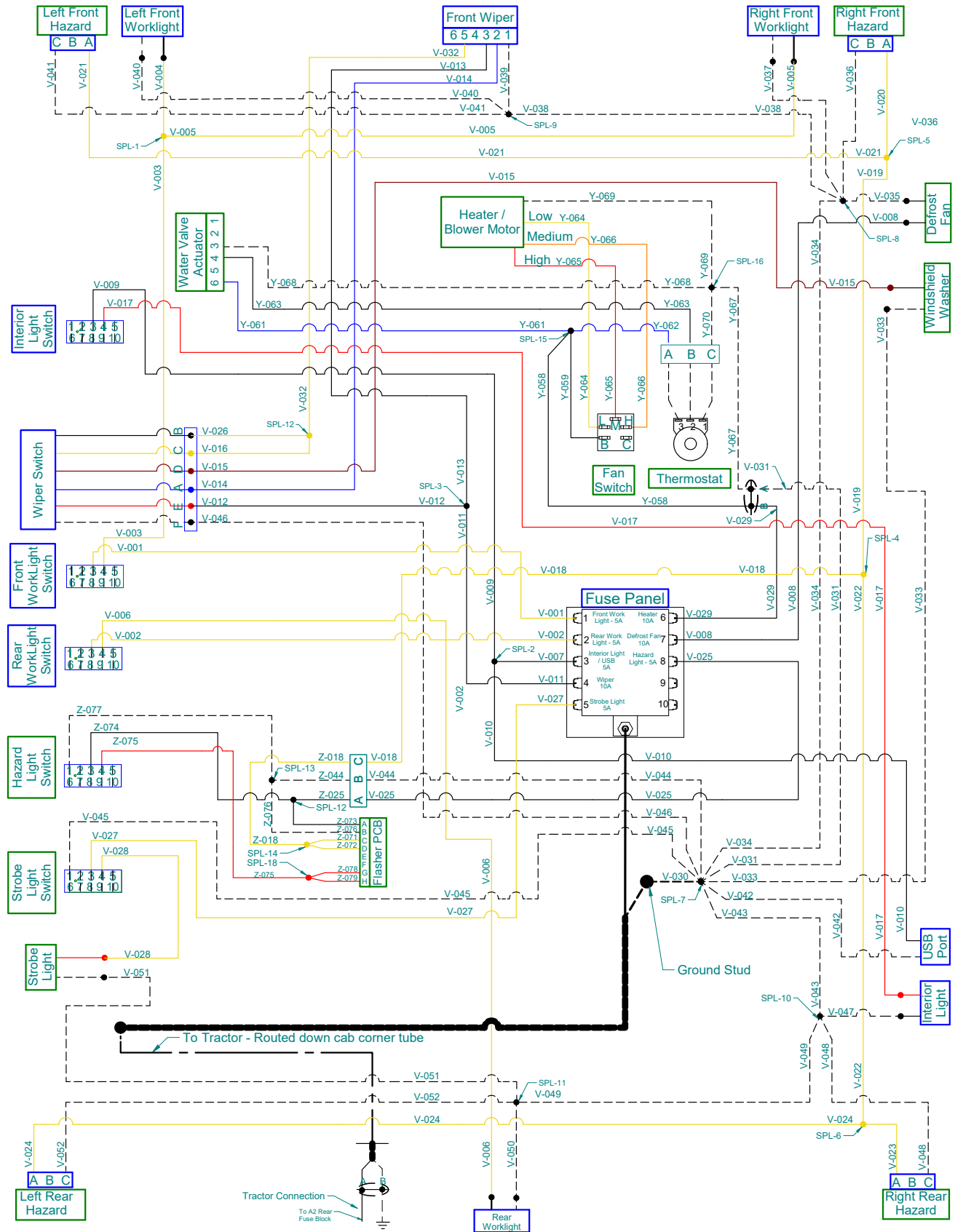
All other wires colors are as shown

Anything outlined with a blue box is a Standard Feature

Anything outlined with a Green box is a Option

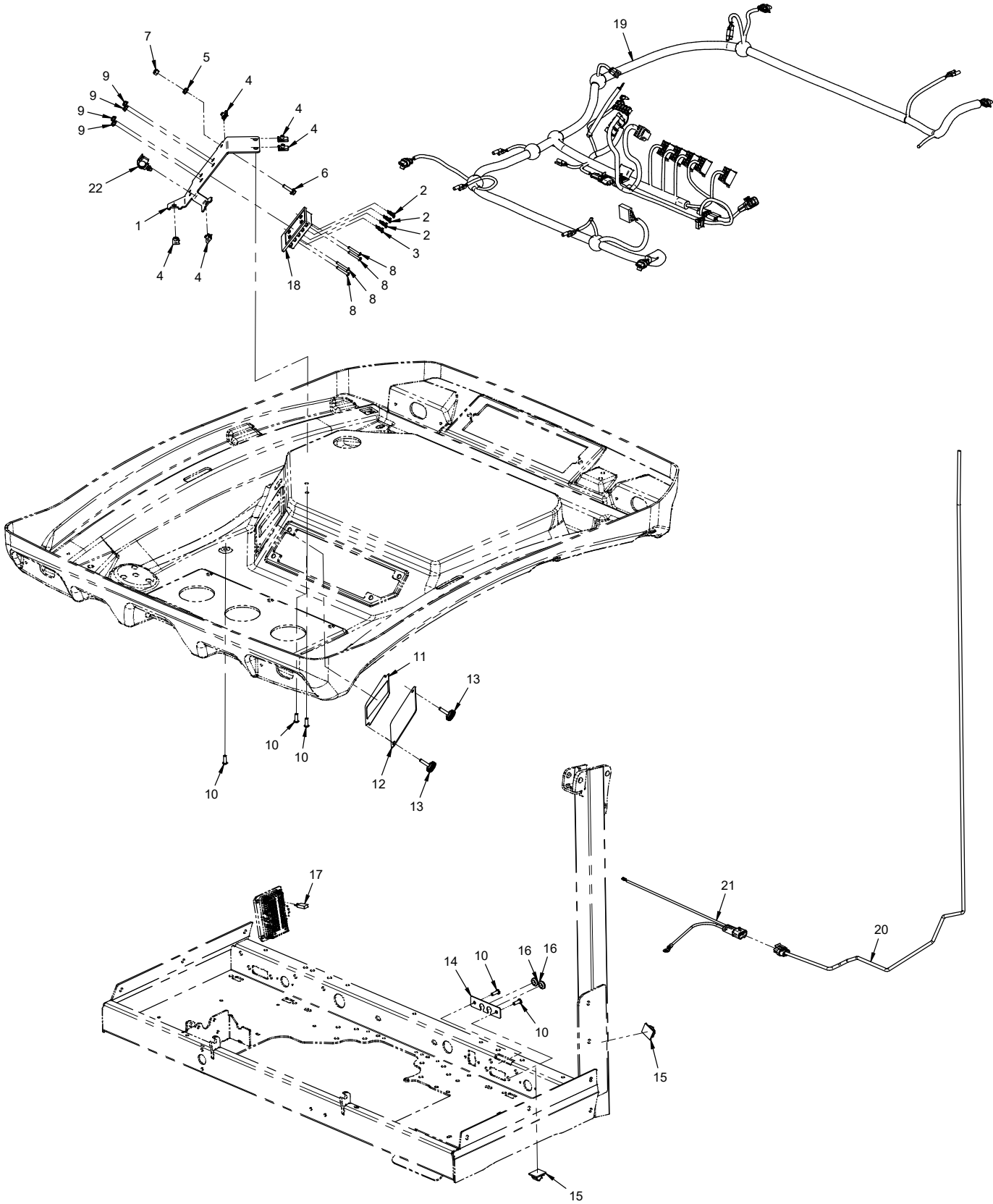
# PARTS

## Wiring Diagram



# PARTS

## ILLUSTRATED DRAWING Wire Harness & Fuse Panel



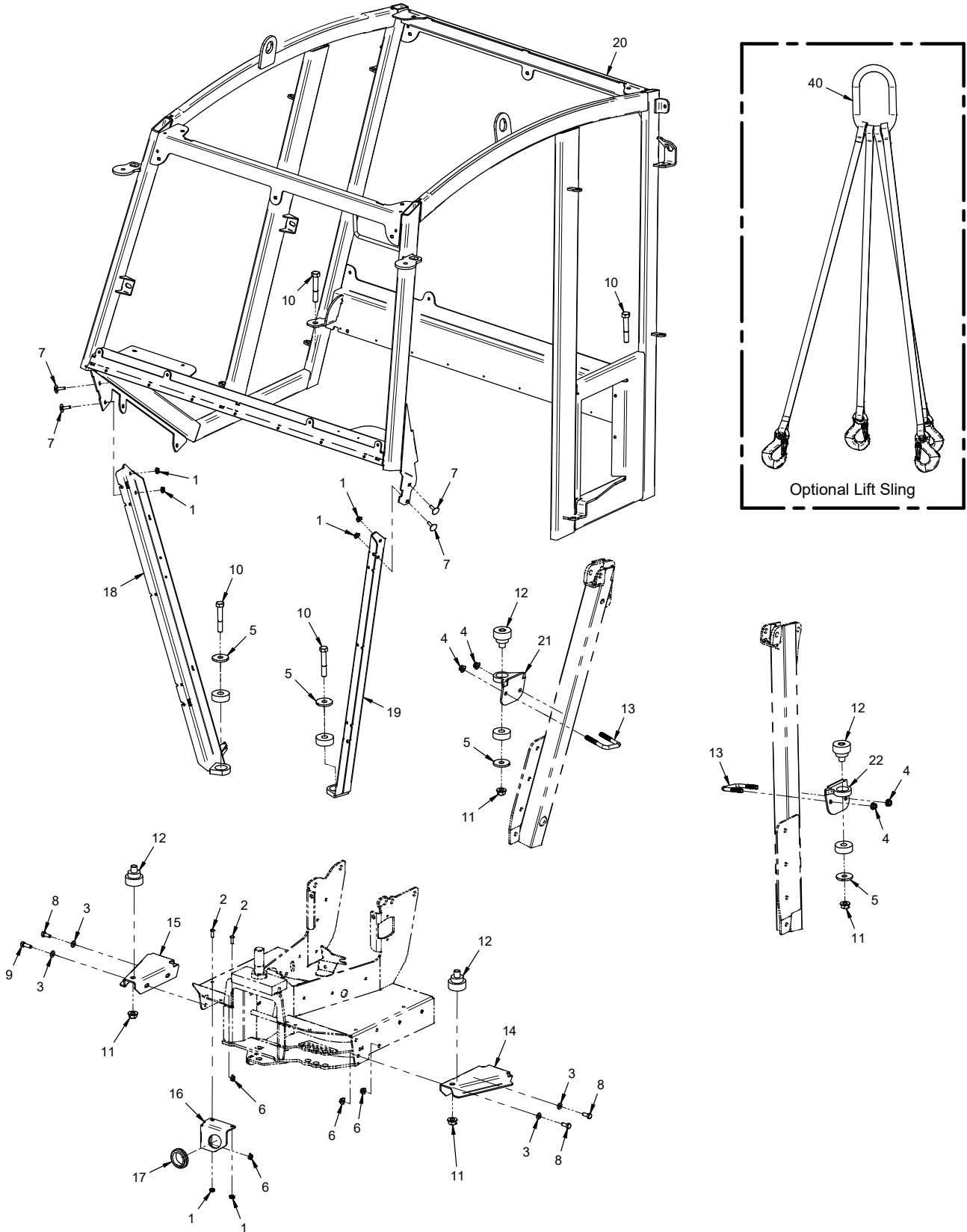
# PARTS

## Wire Harness & Fuse Panel

REF.	PART NO.	DESCRIPTION	QTY.
1	64.1913	.BRACKET, FUSE PANEL	1
2	30.0187	.FUSE, 5 AMP ATC BLADE - TAN.	3
3	30.0317	.FUSE, 10 AMP ATC BLADE - RED	1
4	99.E0046	.NUT, "U" 1/4-20 EXTRUDED	5
5	99.SF04	.NUT, SRF 1/4-20 USS	1
6	99.SF0408	.BOLT, SRF 1/4 X 1 USS	1
7	99.A04N	.LOCKNUT, NYLON 1/4-20	1
8	99.K0144	.MACHINE SCREW, #10-32 X 1-1/4	4
9	99.E0035	.NUT, SRF #10-32	4
10	99.0406	.BOLT, 1/4-20 X 3/4 BSCS	5
11	00.0412	.DECAL, FUSE POSITION	1
12	60.1273	.COVER, FUSE PANEL	1
13	47.0399	.KNOB, 1/4-20 X 1 KNURLED	2
14	60.1175	.COVER, OPT. LIGHT KIT ACCESS	1
15	30.0217	.CLAMP, WIRE MT ADH. 1/2 GRAY	2
16	05.0136	.GROMMET, 7/16ID, 3/4OD, 1/4THK	2
17	30.0445	.BREAKER, CIRCUIT 30 AMP MINI	1
18	30.0499	.FUSE PANEL, 10 POS ATC	1
19	32.0168	.HARNESS, WIRE "2" SERIES CAB	1
20	32.0169	.HARNESS, WIRE KW452 SUPPLY	1
21	32.0129	.HARNESS, WIRE TRACTOR TO KW450	1
22	30.0135	.CLAMP, LOOM 3/8 ROSEBUD MOUNT	1

# PARTS

## ILLUSTRATED DRAWING Cab Frame & Mount





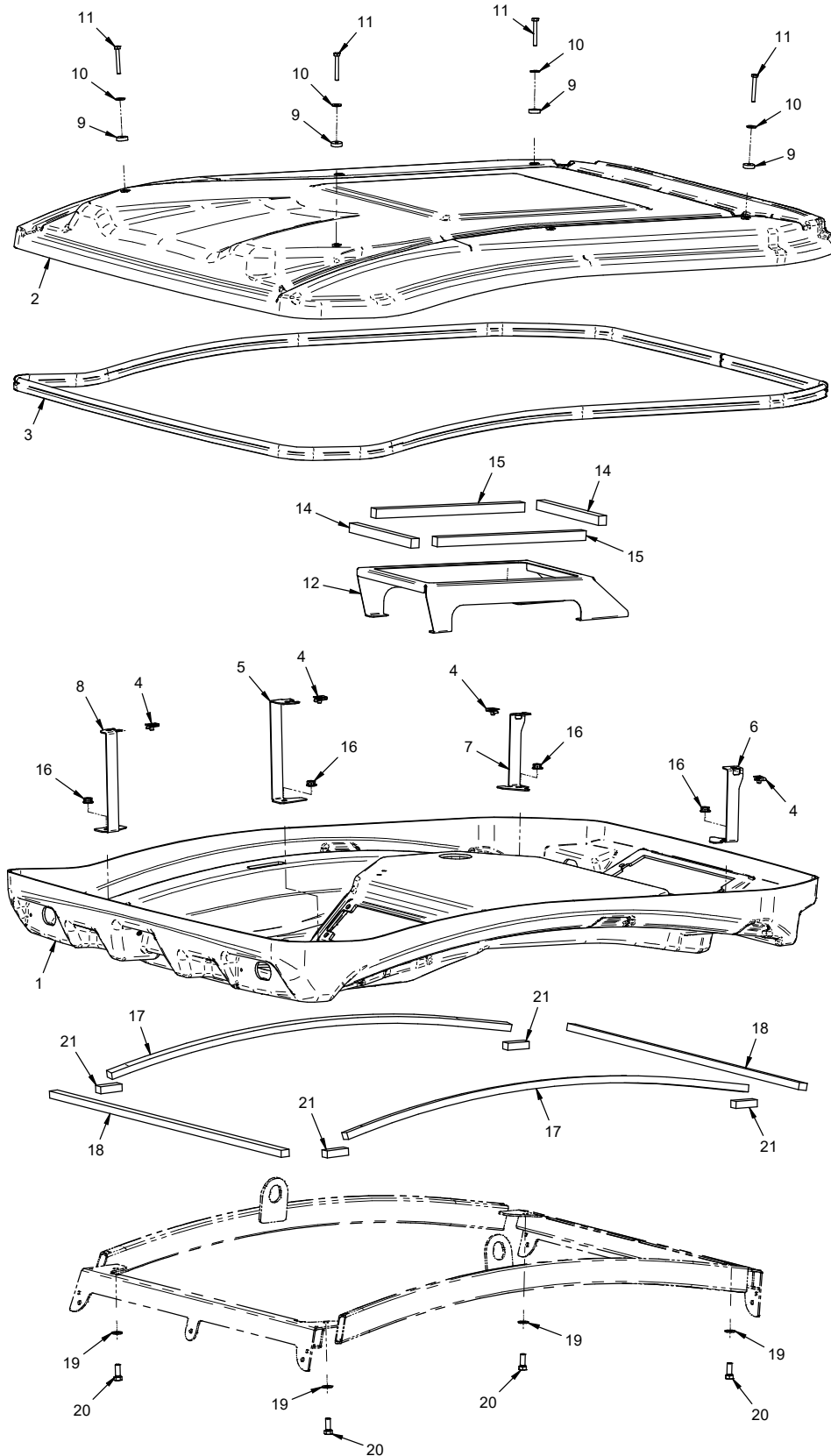
# PARTS

## Cab Frame & Mount

REF.	PART NO.	DESCRIPTION	QTY.
1	99.SF04	.NUT, SRF 1/4-20 USS	6
2	99.0406	.BOLT, 1/4-20 X 3/4 BSCS	2
3	95.05	.WASHER, FLAT 5/16 SAE	4
4	99.E0082	.NUT, LOCKING FLANGE 3/8-16	4
5	99.B0095	.WASHER, .531 X 1.75 3/16 THICK	4
6	99.SF05	.NUT, SRF 5/16-18 USS	4
7	99.K0143	.BOLT, STEP 1/4-20 X 1 BLK	4
8	90.0506	.BOLT, 5/16-18 USS X 3/4"	3
9	90.0508	.BOLT, 5/16-18 USS X 1"	1
10	90.0824	.BOLT, 1/2-13 USS X 3	4
11	99.E0103	.NUT, LOCKING FLANGE 1/2-13	4
12	05.0123	.ISOLATOR, .53 ID X 1.87 OD	4
13	11.0053	.U-BOLT, 3/8-16 2-1/16" ID SQ	2
14	64.1732	.MOUNT, CAB FRONT LEFT	1
15	64.1733	.MOUNT, CAB FRONT RIGHT	1
16	64.1738	.BRACKET, MOUNT SUPPORT	1
17	05.0036	.GROMMET, 1 1/2ID,2 1/8OD,9/16T	1
18	64.1474	.SUPPORT, CAB FRONT RH	1
19	64.1473	.SUPPORT, CAB FRONT LH	1
20	62.1463	.FRAME, MAIN KW452	1
21	64.1478	.MOUNT, CAB REAR RIGHT	1
22	64.1477	.MOUNT, CAB REAR LEFT	1
40	47.0381	.SLING, LIFT (OPTIONAL)	1

# PARTS

## ILLUSTRATED DRAWING Cab Roof Mount



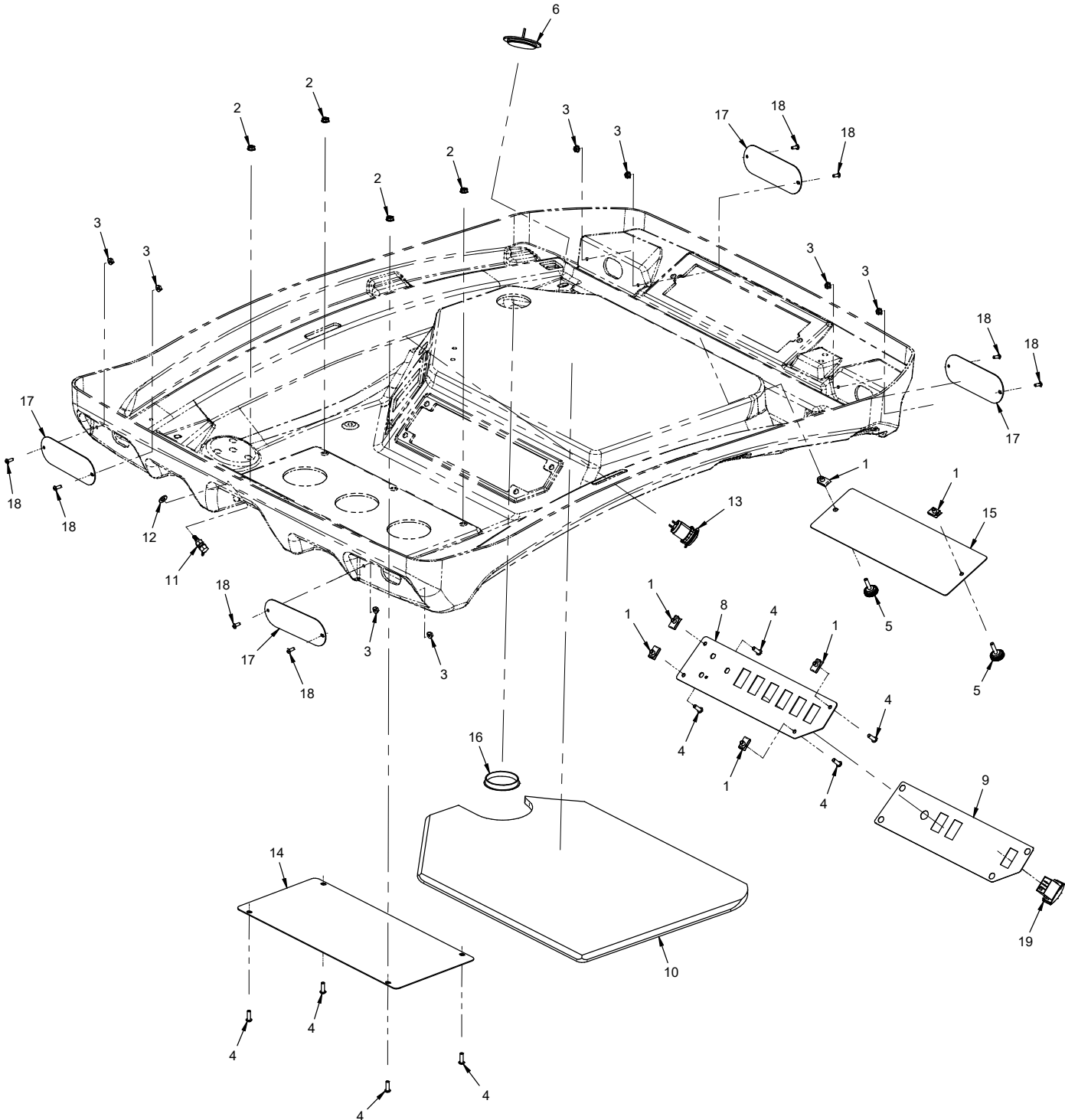
# PARTS

## Cab Roof Mount

REF.	PART NO.	DESCRIPTION	QTY.
1	44.0362	.HEADLINER, CAB	1
2	44.0363	.ROOF, CAB	1
3	06.0080-186IN	.TRIM, SEAL 7/16" BULB X 186"	1
4	99.E0046	.NUT, "U" 1/4-20 EXTRUDED	4
5	64.1918	.BRACKET, ROOF MNT FRONT LEFT	1
6	64.1919	.BRACKET, ROOF MNT REAR LEFT	1
7	64.1939	.BRACKET, ROOF MNT REAR RIGHT	1
8	64.1935	.BRACKET, ROOF MNT FRONT RIGHT	1
9	05.0168	.WASHER, 1/4 ID X 7/8 OD X 1/4T	4
10	94.04	.WASHER, FLAT 1/4 USS	4
11	90.0420-2	.BOLT, 1/4-20 X 2" TAP ZP	4
12	64.1945	.BRACKET, ROOF SUPPORT	1
14	06.0081-9IN	.WEATHERSTRIP, 3/4 X 3/4 FOAM X 9"	2
15	06.0081-14IN	.WEATHERSTRIP, 3/4 X 3/4 FOAM X 14"	2
16	99.E0082	.NUT, LOCKING FLANGE 3/8-16	4
17	06.0081-38IN	.WEATHERSTRIP, 3/4 X 3/4 FOAM X 38"	2
18	06.0081-34.25IN	.WEATHERSTRIP, 3/4 X 3/4 FOAM X 34-1/4"	2
19	95.06	.WASHER, FLAT 3/8 SAE	4
20	90.0608	.BOLT, 3/8-16 USS X 1	4
21	06.0081-2IN	.WEATHERSTRIP, 3/4 X 3/4 FOAM X 2"	4

# PARTS

## ILLUSTRATED DRAWING Main Switch Panel, Cover Plates, & Components



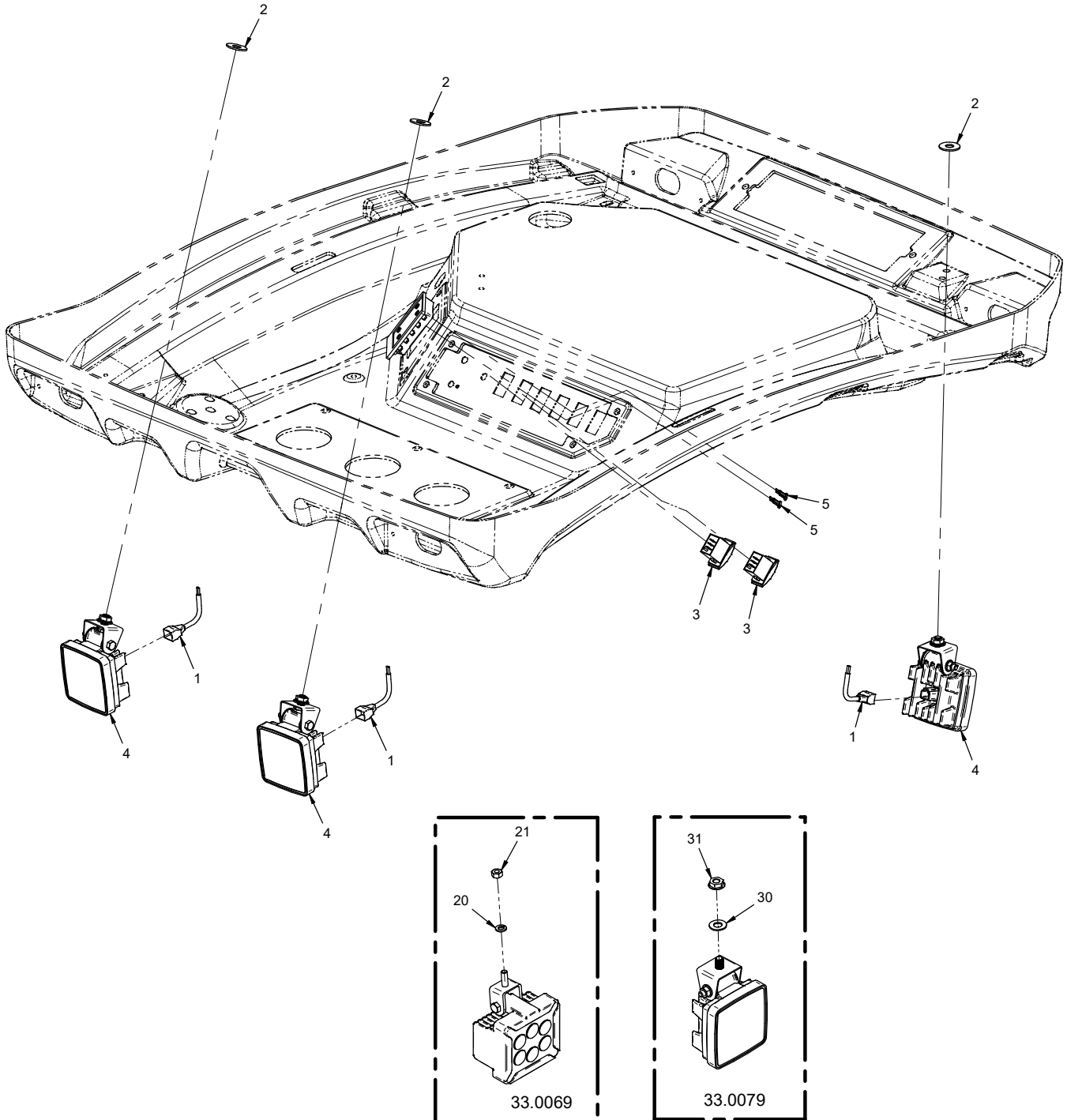
# PARTS

## Main Switch Panel, Cover Plates, & Components

REF.	PART NO.	DESCRIPTION	QTY.
1	99.E0046	.NUT, "U" 1/4-20 EXTRUDED	6
2	99.SF04	.NUT, SRF 1/4-20 USS	4
3	99.E0035	.NUT, SRF #10-32	8
4	99.0406	.BOLT, 1/4-20 X 3/4 BSCS (Serial # 01001-01286)	8
4	99.0406	.BOLT, 1/4-20 X 3/4 BSCS (Serial # 01287-)	4
5	47.0399	.KNOB, 1/4-20 X 1 KNURLED	2
6	33.0072	.LIGHT, INTERIOR DOME	1
8	64.1914	.PLATE, MAIN SWITCH PANEL	1
9	00.0413	.DECAL, MAIN SWITCH PANEL	1
10	44.0364	.UPHOLSTERY, HEADLINER	1
11	47.0402	.FITTING, BULKHEAD 90 DEG	1
12	95.05	.WASHER, FLAT 5/16 SAE	1
13	30.0480	.RECEPTACLE, USB DUAL	1
14	64.1920	.PLATE, FRONT VENT COVER (Serial # 01001-01286)	1
15	47.0385	.RETAINER, NO FILTER (SOLID) (Serial # 01001-01286)	1
16	05.0076	.PLUG, 2-1/2" HOLE, BLK PLASTIC (Serial # 01001-01286)	1
17	64.1922	.PLATE, LIGHT COVER	4
18	99.K0062	.MACHINE SCREW, #10-32 X 1/2	8
19	31.0053	.SWITCH, ROCKER ON/OFF	4

# PARTS

## ILLUSTRATED DRAWING Front & Rear Work Lights



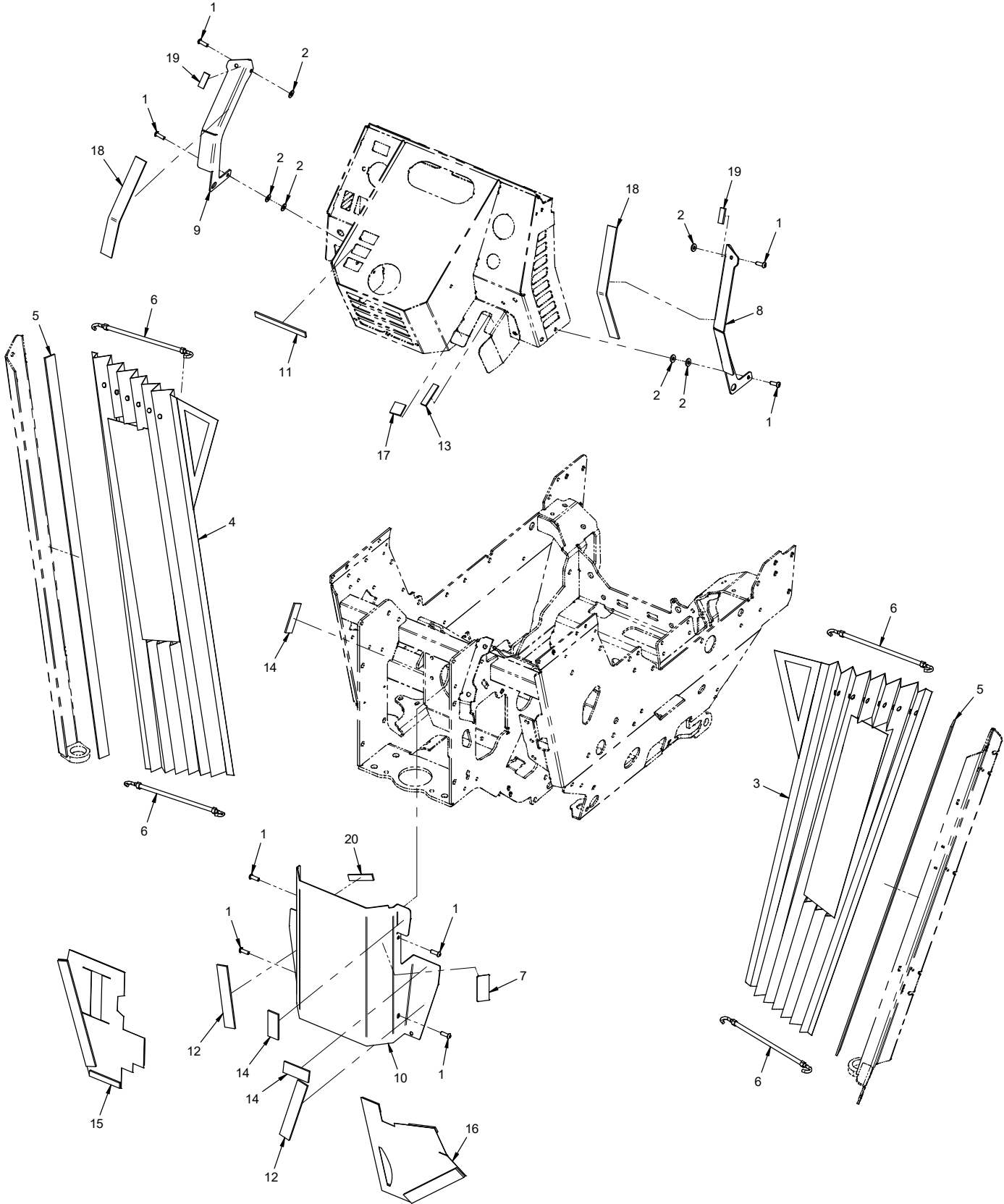
# PARTS

## Front & Rear Work Lights

REF.	PART NO.	DESCRIPTION	QTY.
1	32.0161	.HARNESS, WIRE 33.0069 BULLET (Serial # 01001-01316)	3
1	32.0177	.HARNESS, WIRE GROTE WORK LIGHT (Serial # 01317-)	3
2	99.B0118	.WASHER, FENDER 5/16 X 1-1/4 (Serial # 01001-01316)	3
2	94.07	.WASHER, FLAT 7/16 USS (Serial # 01317-)	3
3	31.0053	.SWITCH, ROCKER ON/OFF	2
4	33.0069	.LIGHT, WORK 3 X 3 LED (Serial # 01001-01316)	3
4	33.0079	.LIGHT, LED WIDE FLOOD (Serial # 01317-)	3
5	30.0187	.FUSE, 5 AMP ATC BLADE - TAN	2
20	96.05	.WASHER, LOCK 5/16	1
21	99.M0025	.NUT, M8 X 1.25MM	1
30	95.07	.WASHER, FLAT 7/16 SAE	1
31	99.M0021	.NUT, SMF M10 X 1.5MM	1

# PARTS

## ILLUSTRATED DRAWING Canvas Bellows & Column Covers





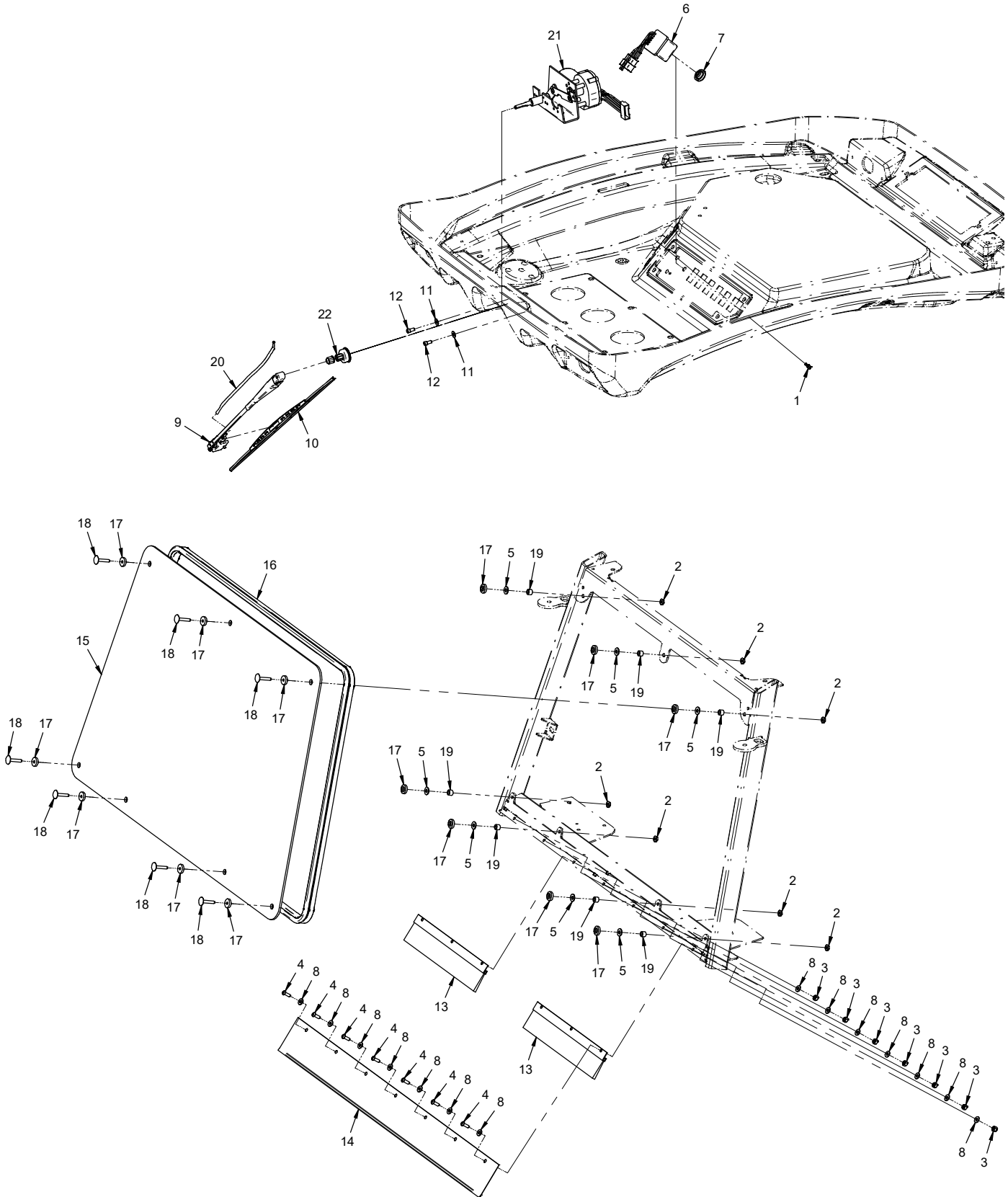
# PARTS

## Canvas Bellows & Column Covers

REF.	PART NO.	DESCRIPTION	QTY.
1	99.0406	.BOLT, 1/4-20 X 3/4 BSCS	8
2	95.04	.WASHER, FLAT 1/4 SAE	6
3	44.0326	.CANVAS, PLEATED RIGHT	1
4	44.0325	.CANVAS, PLEATED LEFT	1
5	06.0065-35IN	.VELCRO, LOOP 1" BLACK X 35"	2
6	47.0425	.STRAP, BELLOWS SUPPORT	4
7	00.0318	.DECAL, NEUTRAL ASSIST	1
8	64.1740	.MOUNT, CANVAS COLUMN RIGHT	1
9	64.1739	.MOUNT, CANVAS COLUMN LEFT	1
10	60.1180	.COVER, PUMP W/FLANGES	1
11	06.0071-5IN	.VELCRO, LOOP, 1/2" WIDE X 5"	1
12	06.0065-5.5IN	.VELCRO, LOOP, 1" BLACK X 5-1/2"	2
13	06.0071-2IN	.VELCRO, LOOP, 1/2" BLACK X 2"	1
14	06.0065-2.5IN	.VELCRO, LOOP 1" BLACK X 2-1/2"	3
15	44.0328	.CANVAS, COLUMN LEFT	1
16	44.0329	.CANVAS, COLUMN RIGHT	1
17	06.0065-1IN	.VELCRO, LOOP 1" BLACK X 1"	1
18	06.0065-9.75IN	.VELCRO, LOOP 1" BLACK X 9-3/4"	2
19	06.0071-1.25IN	.VELCRO, LOOP 1/2" BLACK X 1-1/4"	2
20	06.0071-2.5IN	.VELCRO, LOOP 1/2" BLACK X 2-1/2"	1

# PARTS

## ILLUSTRATED DRAWING Front Windshield & Windshield Wiper



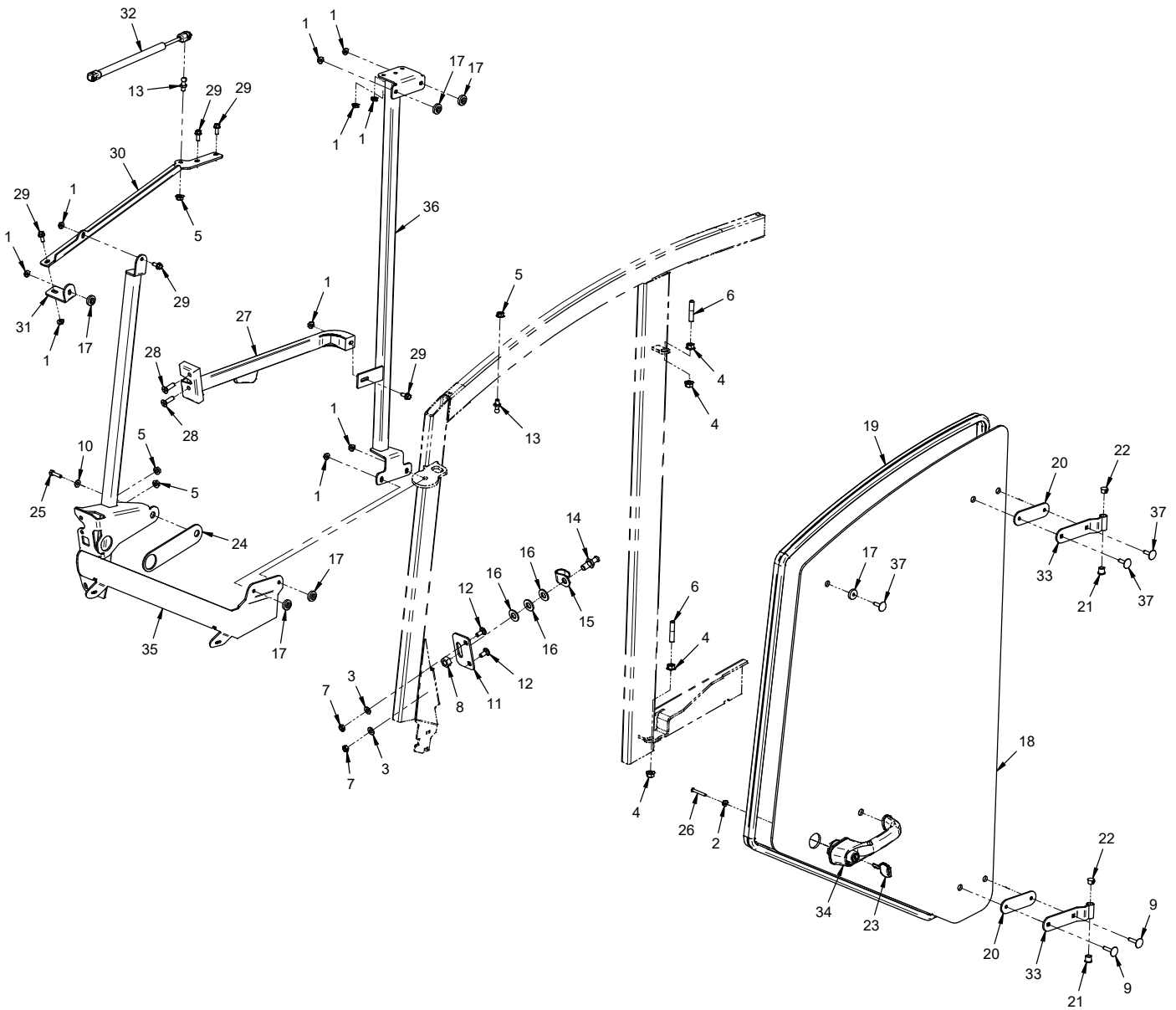
# PARTS

## Front Windshield & Windshield Wiper

REF.	PART NO.	DESCRIPTION	QTY.
1	30.0317	.FUSE, 10 AMP ATC BLADE - RED	1
2	99.SF04	.NUT, SRF 1/4-20 USS	7
3	99.A04N	.LOCKNUT, NYLON 1/4-20	7
4	99.0406	.BOLT, 1/4-20 X 3/4 BSCS	7
5	94.04	.WASHER, FLAT 1/4 USS	7
6	31.0069	.SWITCH, WIPER ROTARY W/WASHER	1
7	31.0069-1	.KNOB, WIPER SWITCH	1
8	95.04	.WASHER, FLAT 1/4 SAE	14
9	47.0403	.WIPER ARM, RADIAL 16" WET	1
10	47.0287	.WIPER BLADE, WINDSHIELD 21"	1
11	95.04-3	.WASHER, FLAT 1/4 SAE SS	2
12	99.K0142	.BOLT, SHCS 1/4-28 X 1/2 SS	2
13	79.0096	.BRUSH, CANVAS SUPPORT	2
14	44.0276	.CANVAS, WINDSHIELD BOTTOM	1
15	44.0306	.WINDOW, FRONT WINDSHIELD 3/16	1
16	06.0072-128IN	.TRIM, SEAL DOUBLE BULB 3/16 X 128"	1
17	85.B0098	.BUSHING, STEP 1/4 X 7/8 X 5/16H	14
18	99.K0119	.BOLT, STEP 1/4-20 X 1-1/2 BLK	7
19	05.0166	.SPACER, 1/4 X 1/2 X 3/8L	7
20	27.0004	.TUBING, WASHER FOR WIPER ARM	1
21	37.0056	.MOTOR, WINDSHIELD WIPER 1 SPD	1
22	47.0301	.KIT, WIPER MOTOR HARDWARE	1

# PARTS

## ILLUSTRATED DRAWING Upper Door Frame & Latch



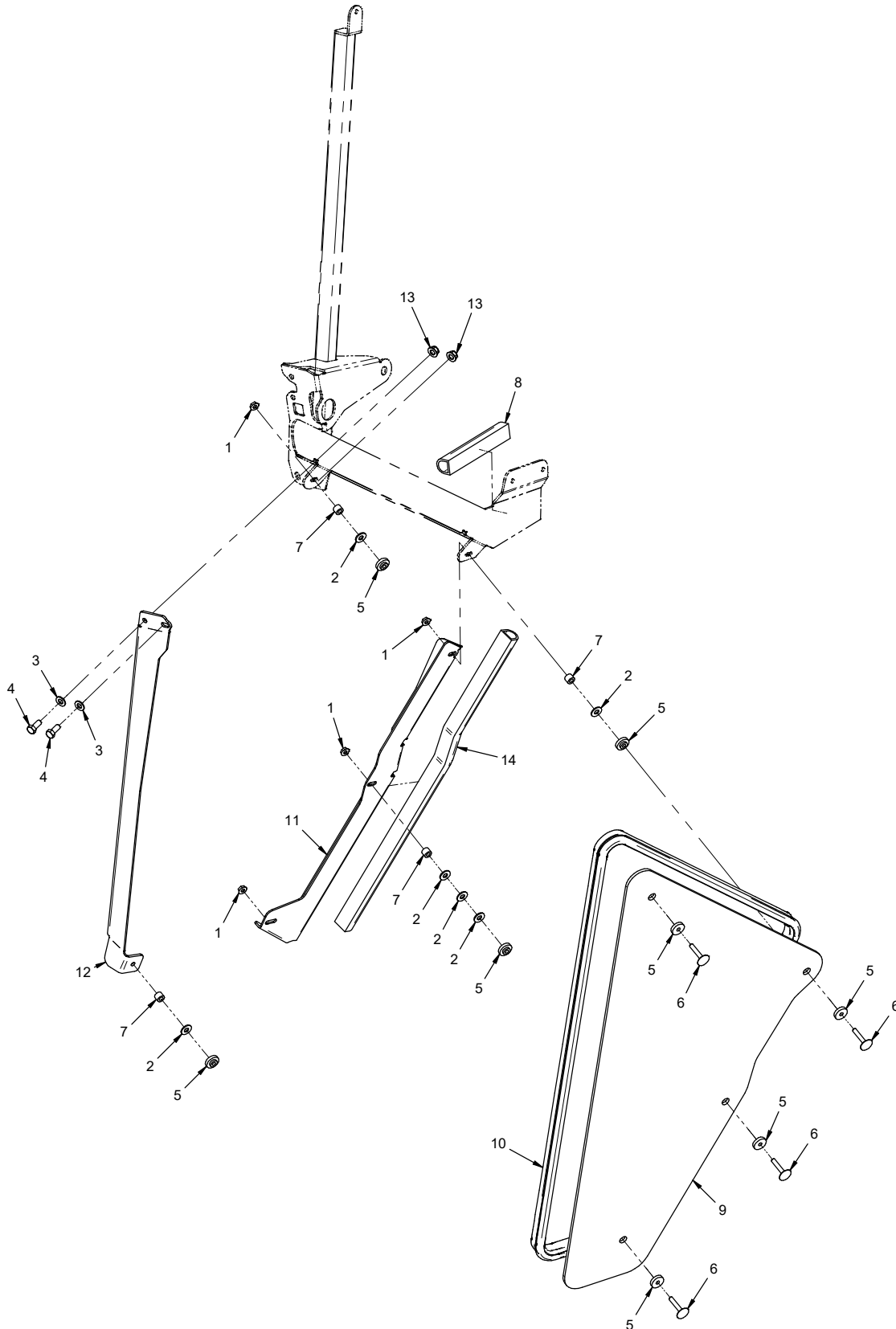
# PARTS

## Upper Door Frame & Latch

REF.	PART NO.	DESCRIPTION	QTY.
1	99.SF04	.NUT, SRF 1/4-20 USS	10
2	99.E0035	.NUT, SRF #10-32	1
3	95.05	.WASHER, FLAT 5/16 SAE	2
4	99.SF06	.NUT, SRF 3/8-16 USS	4
5	99.SF05	.NUT, SRF 5/16-18 USS	4
6	99.F0043	.PIN, HINGE 3/8-16 X 1-7/8 SS	2
7	99.A05	.LOCKNUT, STOVER 5/16-18 USS	2
8	99.M0023	.NUT, M12 X 1.0MM	1
9	99.K0115	.BOLT, STEP 1/4-20X1-1/4 BLK	2
10	95.04	.WASHER, FLAT 1/4 SAE	1
11	64.1488	.MOUNT, STRIKER PIN	1
12	97.0506	.BOLT, CARRIAGE 5/16 X 3/4	2
13	47.0225	.STUD, BALL 10MM 5/16-18 THREAD	2
14	47.0283	.STRIKER, DOOR LATCH	1
15	47.0284	.GUARD, STRIKER	1
16	95.08	.WASHER, FLAT 1/2 SAE	3
17	85.B0098	.BUSHING, STEP 1/4 X 7/8 X 5/16H	6
18	44.0291	.WINDOW, DOOR UPPER 3/16	1
19	06.0072-127IN	.TRIM, SEAL DOUBLE BULB 3/16" X 127"	1
20	44.0274	.GASKET, GLASS HINGE MOUNT	2
21	85.B0068	.BUSHING, 3/8 X 1/2 OD X 1/2 LG	2
22	05.0070	.PLUG, 1/2" HOLE, NYLON	2
23	47.0357	.KEY, DOOR HANDLE KW (2 KEYS)	1
24	44.0273	.GASKET, DOOR HANDLE INNER	1
25	99.M0022	.BOLT, M6 X 1.0 X 25MM	1
26	99.K0067	.MACHINE SCREW, #10-32 X 1-1/2	1
27	47.0282	.LATCH, DOOR ASM	1
28	99.K0116	.MACHINE SCREW, 5/16-18 X 1-1/4	2
29	99.SF0405-1	.BOLT, SMF 1/4-20 X 5/8	5
30	64.1493	.BRACKET, DOOR FRAME TOP	1
31	64.1489	.BRACKET, DOOR GLASS MOUNT	1
32	47.0289	.SHOCK, GAS SPRING .59 DIA 20#	1
33	64.1480	.HINGE, GLASS MOUNT	2
34	47.0281	.HANDLE, PUSH BUTTON ASM	1
35	62.1327	.FRAME, DOOR FRONT	1
36	62.1328	.FRAME, DOOR REAR	1
37	99.K0143	.BOLT, STEP 1/4-20 X 1 BLK	3

# PARTS

## ILLUSTRATED DRAWING Lower Door



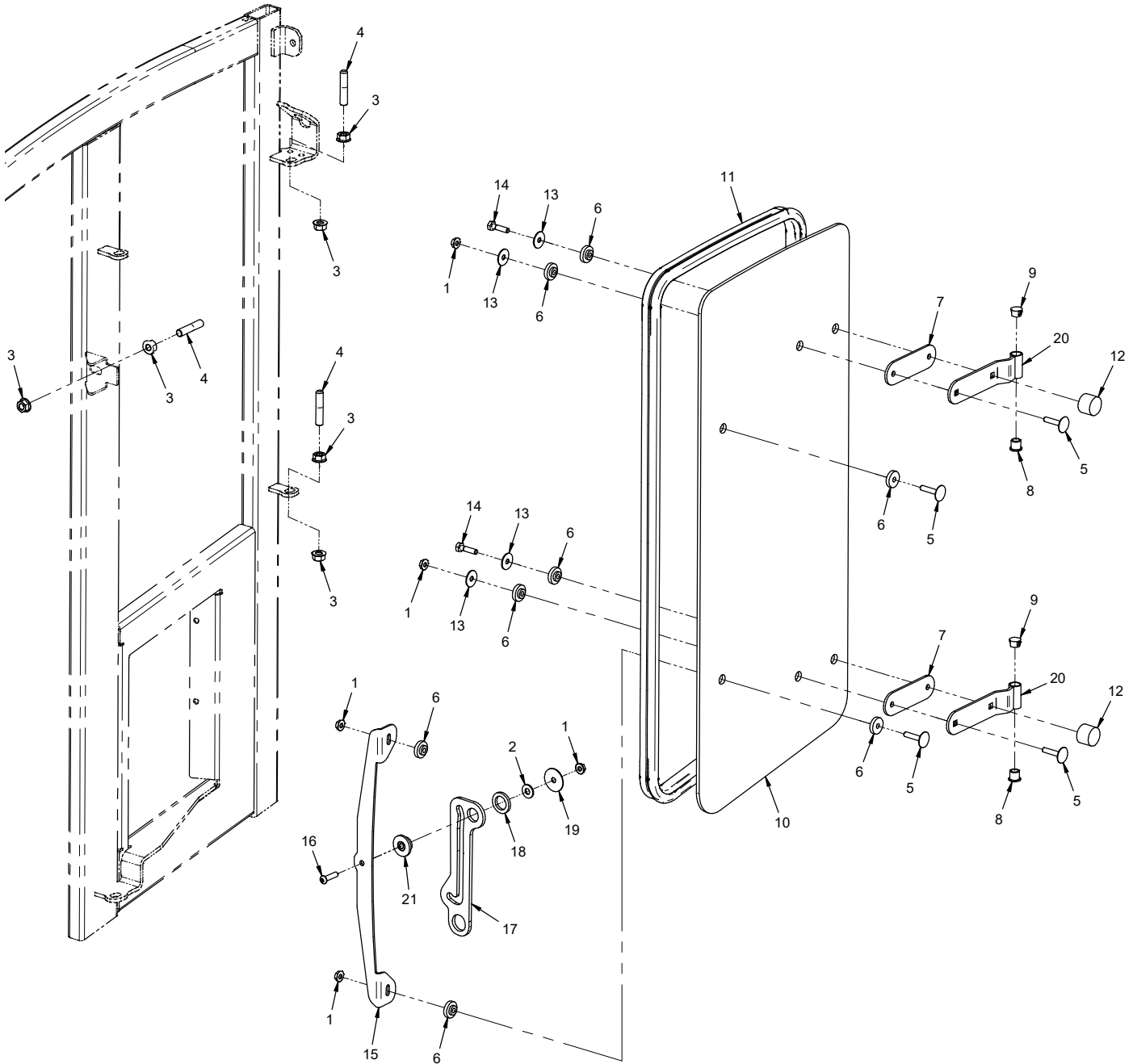
# PARTS

## Lower Door

REF.	PART NO.	DESCRIPTION	QTY.
1	99.SF04	NUT, SRF 1/4-20 USS	4
2	94.04	WASHER, FLAT 1/4 USS	6
3	95.05	WASHER, FLAT 5/16 SAE	2
4	90.0506	BOLT, 5/16-18 USS X 3/4"	2
5	85.B0098	BUSHING, STEP 1/4 X 7/8 X 5/16H	8
6	99.K0119	BOLT, STEP 1/4-20 X 1-1/2 BLK	4
7	05.0166	SPACER, 1/4 X 1/2 X 3/8L	4
8	06.0064-6IN	WEATHERSTRIP, 1 X1 D-SHAPE X 6"L	1
9	44.0292	WINDOW, DOOR LOWER 3/16	1
10	06.0072-90IN	TRIM, SEAL DOUBLE BULB 3/16" X 90"	1
11	64.1494	BRACKET, WINDOW DOOR LOWER	1
12	64.1472	SUPPORT, DOOR WINDOW LOWER	1
13	99.E0102	NUT, LOCKING FLANGE 5/16-18	2
14	06.0064-23.5IN	WEATHERSTRIP, 1 X1 D-SHAPE X 23.5"L	1

# PARTS

## ILLUSTRATED DRAWING Left Rear Window





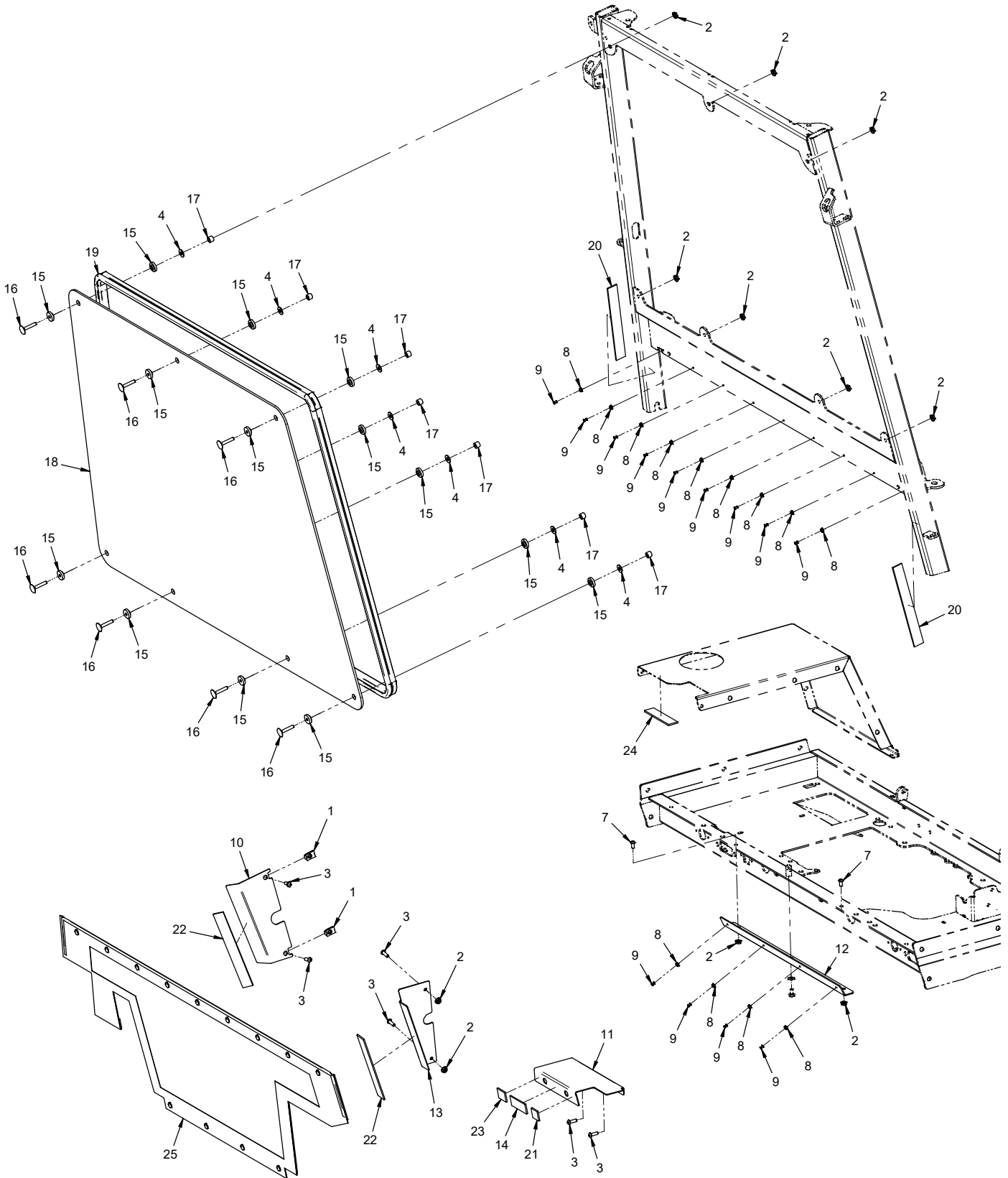
# PARTS

## Left Rear Window

REF.	PART NO.	DESCRIPTION	QTY.
1	99.SF04	.NUT, SRF 1/4-20 USS	5
2	94.04	.WASHER, FLAT 1/4 USS	1
3	99.SF06	.NUT, SRF 3/8-16 USS	6
4	99.F0043	.PIN, HINGE 3/8-16 X 1-7/8 SS	3
5	99.K0143	.BOLT, STEP 1/4-20 X 1 BLK	4
6	85.B0098	.BUSHING, STEP 1/4 X 7/8 X 5/16H	8
7	44.0274	.GASKET, GLASS HINGE MOUNT	2
8	85.B0068	.BUSHING, 3/8 X 1/2 OD X 1/2 LG	2
9	05.0070	.PLUG, 1/2" HOLE, NYLON	2
10	44.0293	.WINDOW, LEFT REAR 3/16	1
11	06.0072-82IN	.TRIM, SEAL DOUBLE BULB 3/16" X 82"	1
12	05.0125	.BUMPER, NEOPRENE 1" DIA	2
13	99.B0100	.WASHER, FENDER 1/4 X 7/8 OD ZP	4
14	90.0408	.BOLT, 1/4-20 USS X 1"	2
15	64.1952	.BRACKET, REAR WINDOW LATCH	1
16	99.0408	.BOLT, 1/4-20 X 1 BSCS	1
17	40.0403	.ARM, SIDE WINDOW LATCH	1
18	05.0164	.WASHER, RUBBER EPDM	1
19	99.B0116	.WASHER, FENDER 1/4 X 1-1/4	1
20	64.1480	.HINGE, GLASS MOUNT	2
21	05.0165	.GROMMET, FLANGE .28X0.74X0.43T	1

# PARTS

## ILLUSTRATED DRAWING Rear Window



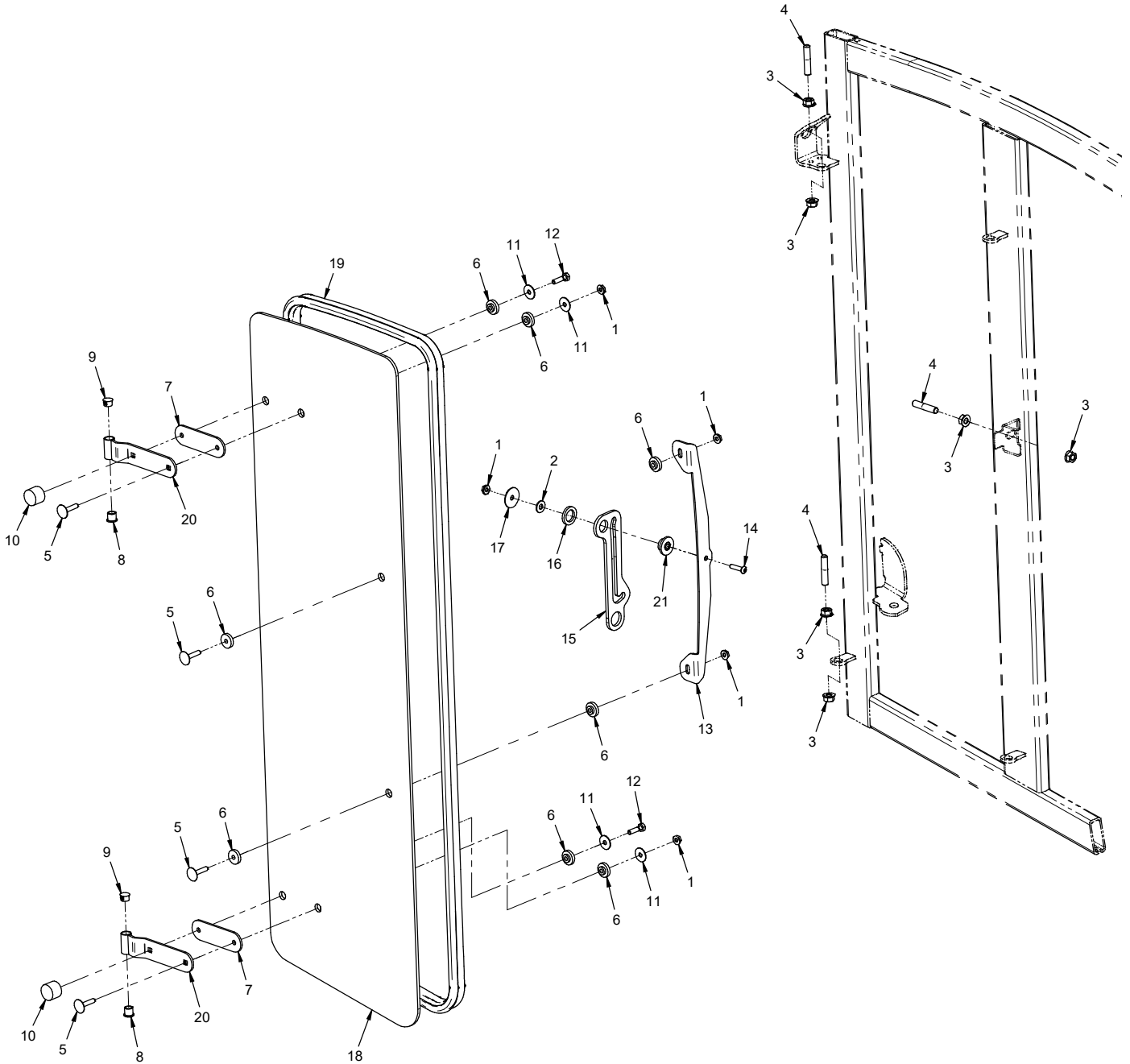
# PARTS

## Rear Window

REF.	PART NO.	DESCRIPTION	QTY.
1	99.E0046	.NUT, "U" 1/4-20 EXTRUDED	2
2	99.SF04	.NUT, SRF 1/4-20 USS	11
3	99.0406	.BOLT, 1/4-20 X 3/4 BSCS	6
4	94.04	.WASHER, FLAT 1/4 USS	7
7	99.0404	.BOLT, 1/4-20 X 1/2 BSCS	2
8	04.0020	.SNAP, STUD 3/8 X 9/16 SS	13
9	04.0029	.RIVET, POP 1/8" X 1/4"	13
10	64.1737	.BRACKET, WINDOW REAR LEFT	1
11	64.1735	.BRACKET, WINDOW REAR TOP	1
12	64.1734	.MOUNT, WINDOW REAR LOWER	1
13	64.1736	.BRACKET, WINDOW REAR RIGHT	1
14	06.0065-2.5IN	.VELCRO, LOOP 1" BLACK X 2-1/2"	1
15	85.B0098	.BUSHING, STEP 1/4 X 7/8 X 5/16H	14
16	99.K0119	.BOLT, STEP 1/4-20 X 1-1/2 BLK	7
17	05.0166	.SPACER, 1/4 X 1/2 X 3/8L	7
18	44.0307	.WINDOW, REAR 3/16	1
19	06.0072-140IN	.TRIM, SEAL DOUBLE BULB 3/16" X 140"	1
20	06.0065-8IN	.VELCRO, LOOP 1" BLACK X 8"	2
21	06.0065-1IN	.VELCRO, LOOP 1" BLACK X 1"	1
22	06.0065-7.75IN	.VELCRO, LOOP 1" BLACK X 7-3/4"	2
23	06.0065-1.25IN	.VELCRO, LOOP 1" BLACK X 1-1/4"	1
24	06.0065-4IN	.VELCRO, LOOP 1" BLACK X 4"	1
25	44.0324	.WINDOW, LOWER REAR CANVAS	1

# PARTS

## ILLUSTRATED DRAWING Right Rear Window



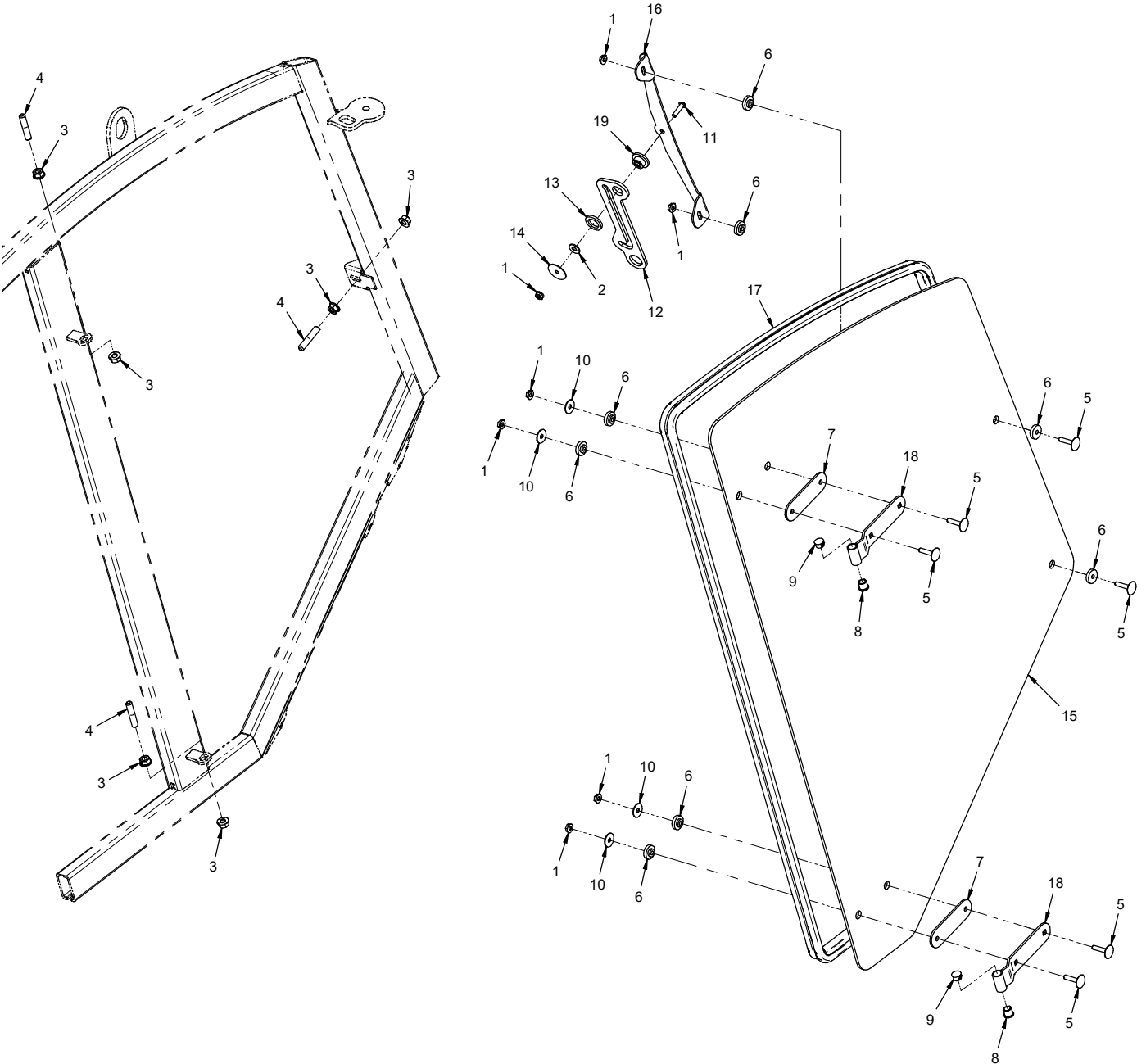
# PARTS

## Right Rear Window

REF.	PART NO.	DESCRIPTION	QTY.
1	99.SF04	.NUT, SRF 1/4-20 USS	5
2	94.04	.WASHER, FLAT 1/4 USS	1
3	99.SF06	.NUT, SRF 3/8-16 USS	6
4	99.F0043	.PIN, HINGE 3/8-16 X 1-7/8 SS	3
5	99.K0143	.BOLT, STEP 1/4-20 X 1 BLK	4
6	85.B0098	.BUSHING, STEP 1/4 X 7/8 X 5/16H	8
7	44.0274	.GASKET, GLASS HINGE MOUNT	2
8	85.B0068	.BUSHING, 3/8 X 1/2 OD X 1/2 LG	2
9	05.0070	.PLUG, 1/2" HOLE, NYLON	2
10	05.0125	.BUMPER, NEOPRENE 1" DIA	2
11	99.B0100	.WASHER, FENDER 1/4 X 7/8 OD ZP	4
12	90.0408	.BOLT, 1/4-20 USS X 1"	2
13	64.1952	.BRACKET, REAR WINDOW LATCH	1
14	99.0408	.BOLT, 1/4-20 X 1 BSCS	1
15	40.0403	.ARM, SIDE WINDOW LATCH	1
16	05.0164	.WASHER, RUBBER EPDM	1
17	99.B0116	.WASHER, FENDER 1/4 X 1-1/4	1
18	44.0294	.WINDOW, RIGHT REAR 3/16	1
19	06.0072-110IN	.TRIM, SEAL DOUBLE BULB 3/16" X 110"	1
20	64.1480	.HINGE, GLASS MOUNT	2
21	05.0165	.GROMMET, FLANGE .28X0.74X0.43T	1

# PARTS

## ILLUSTRATED DRAWING Right Front Window / Emergency Exit



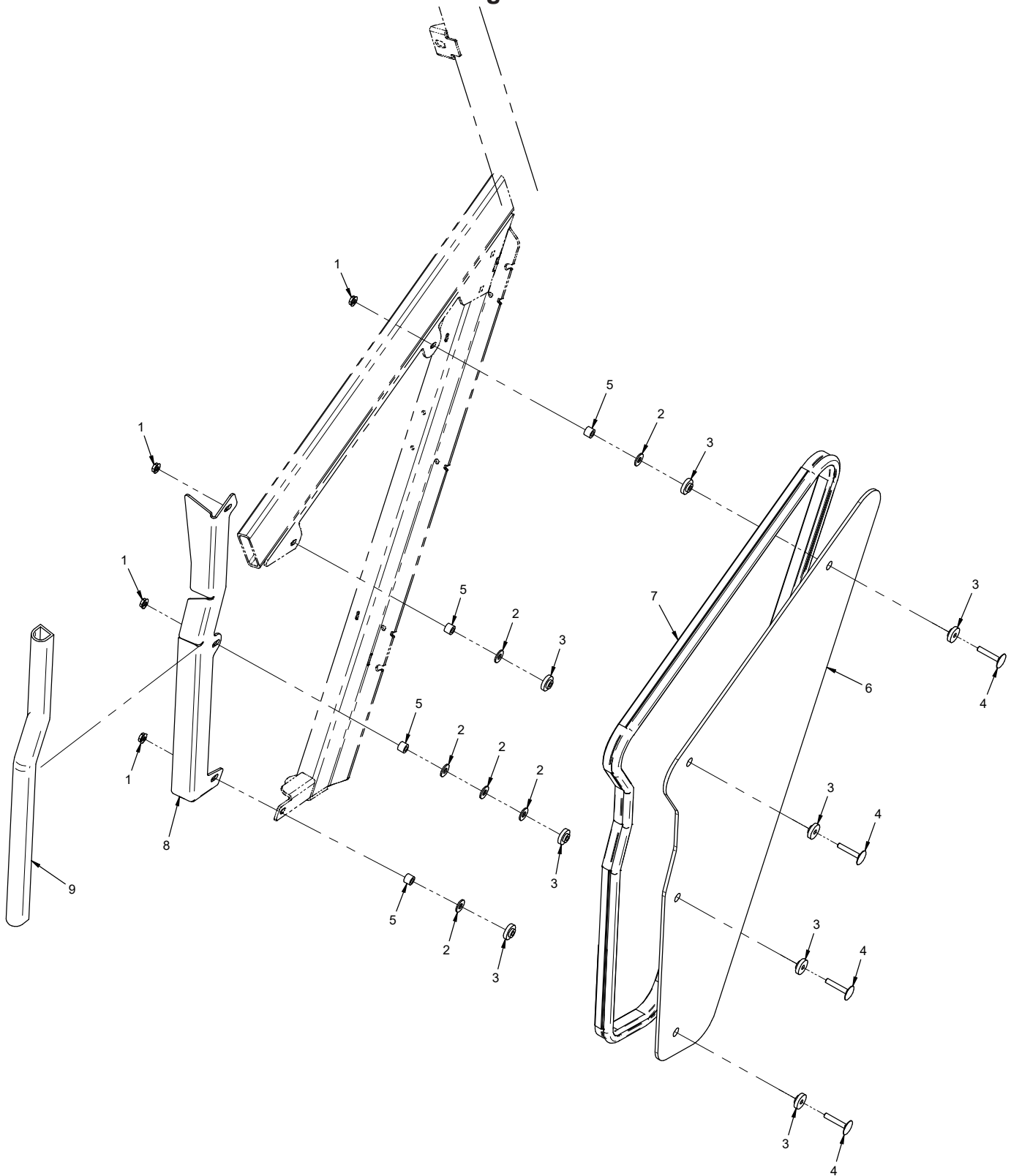
# PARTS

## Right Front Window / Emergency Exit

REF.	PART NO.	DESCRIPTION	QTY.
1	99.SF04	.NUT, SRF 1/4-20 USS	7
2	94.04	.WASHER, FLAT 1/4 USS	1
3	99.SF06	.NUT, SRF 3/8-16 USS	6
4	99.F0043	.PIN, HINGE 3/8-16 X 1-7/8 SS	3
5	99.K0143	.BOLT, STEP 1/4-20 X 1 BLK	6
6	85.B0098	.BUSHING, STEP 1/4 X 7/8 X 5/16H	8
7	44.0274	.GASKET, GLASS HINGE MOUNT	2
8	85.B0068	.BUSHING, 3/8 X 1/2 OD X 1/2 LG	2
9	05.0070	.PLUG, 1/2" HOLE, NYLON	2
10	99.B0100	.WASHER, FENDER 1/4 X 7/8 OD ZP	4
11	99.0408	.BOLT, 1/4-20 X 1 BSCS	1
12	40.0403	.ARM, SIDE WINDOW LATCH	1
13	05.0164	.WASHER, RUBBER EPDM	1
14	99.B0116	.WASHER, FENDER 1/4 X 1-1/4	1
15	44.0295	.WINDOW, RIGHT FRONT ESC 3/16	1
16	64.1953	.BRACKET, ESCAPE WINDOW LATCH	1
17	06.0072-126IN	.TRIM, SEAL DOUBLE BULB 3/16" X 126"	1
18	64.1480	.HINGE, GLASS MOUNT	2
19	05.0165	.GROMMET, FLANGE .28X0.74X0.43T	1

# PARTS

## ILLUSTRATED DRAWING Lower Right Window





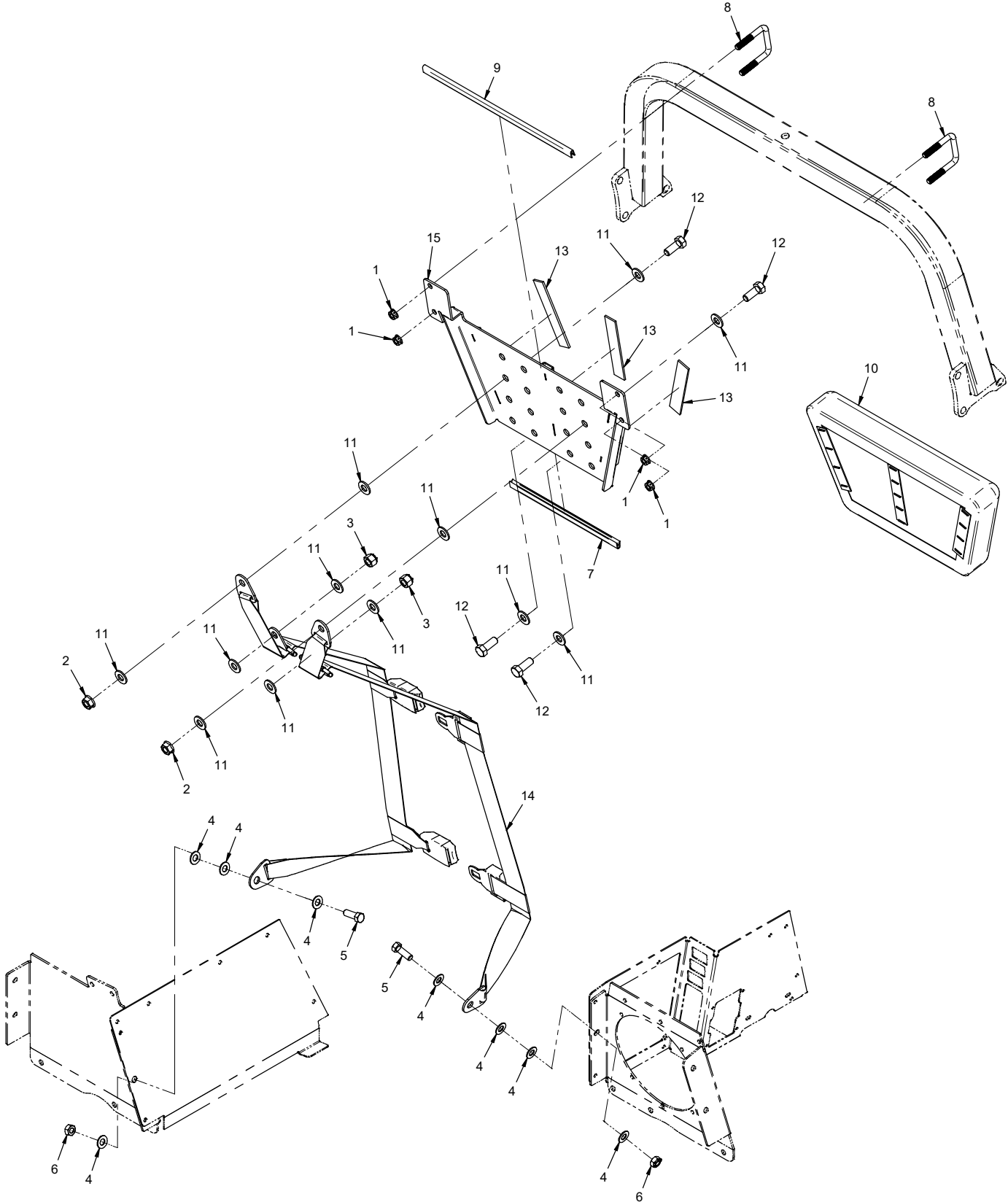
# PARTS

## Lower Right Window

REF.	PART NO.	DESCRIPTION	QTY.
1	99.SF04	.NUT, SRF 1/4-20 USS	4
2	94.04	.WASHER, FLAT 1/4 USS	6
3	85.B0098	.BUSHING, STEP 1/4 X 7/8 X 5/16H	8
4	99.K0119	.BOLT, STEP 1/4-20 X 1-1/2 BLK	4
5	05.0166	.SPACER, 1/4 X 1/2 X 3/8L	4
6	44.0296	.WINDOW, RIGHT LOWER 3/16	1
7	06.0072-88IN	.TRIM, SEAL DOUBLE BULB 3/16" X 88"	1
8	64.1495	.BRACKET, WINDOW RIGHT LOWER	1
9	06.0064-24IN	.WEATHERSTRIP, 1 X1 D-SHAPE X 24"L	1

# PARTS

## ILLUSTRATED DRAWING Four Point Seatbelt



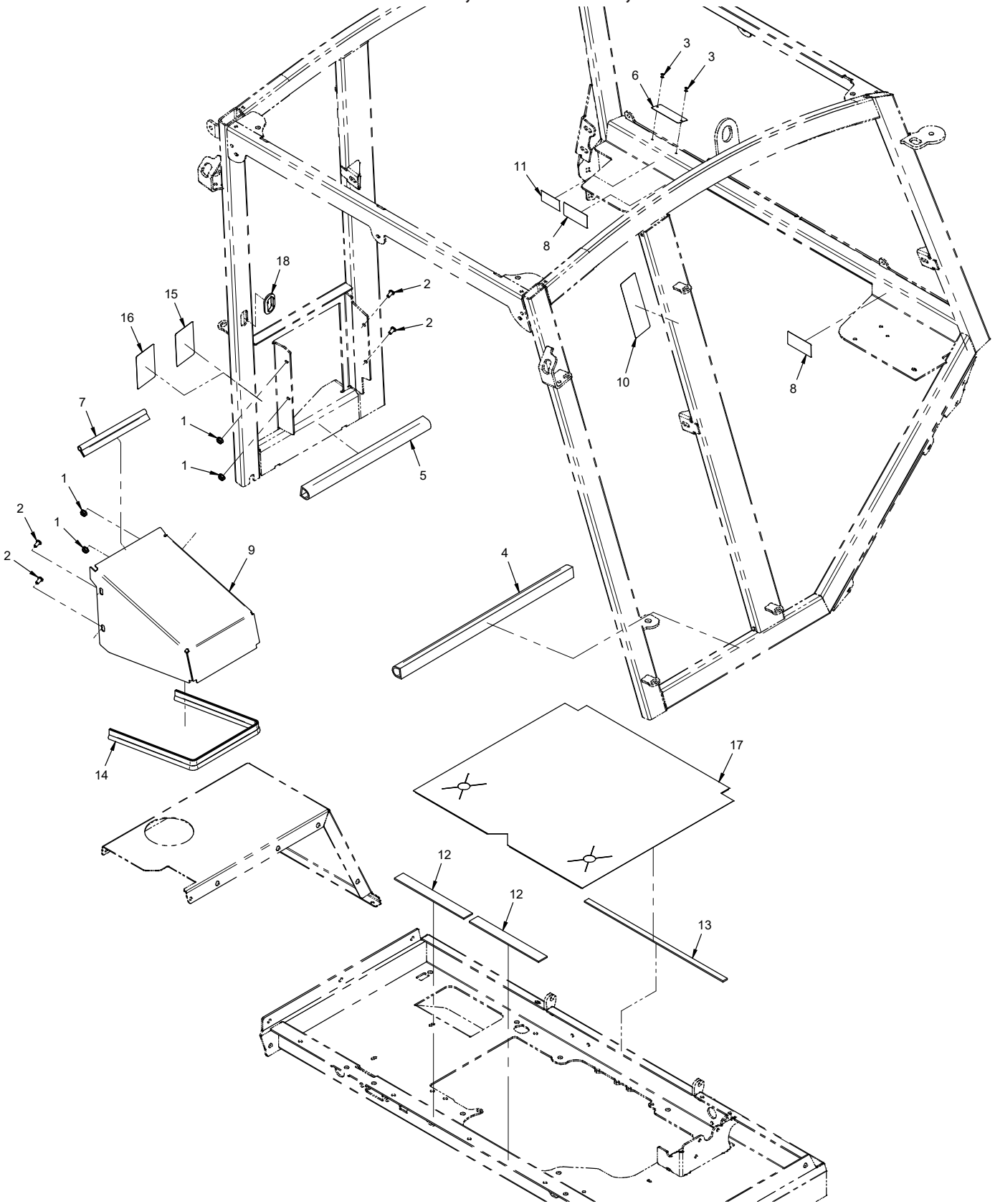
# PARTS

## Four Point Seatbelt

REF.	PART NO.	DESCRIPTION	QTY.
1	99.E0082	NUT, LOCKING FLANGE 3/8-16	4
2	99.SF08	NUT, SRF 1/2-13 USS	2
3	99.A08N	LOCKNUT, NYLON 1/2-13 USS	2
4	95.07	WASHER, FLAT 7/16 SAE	8
5	90.0710	BOLT, 7/16-14 USS X 1-1/4	2
6	99.A07	LOCKNUT, STOVER 7/16-14 USS	2
7	06.0050-11.88IN	TRIM, TRIM LOC 1/2 X 3/16 X 11-7/8"	1
8	11.0053	U-BOLT, 3/8-16 2-1/16" ID SQ	2
9	06.0050-14.88IN	TRIM, TRIM LOC 1/2 X 3/16 X 14-7/8"	1
10	47.0288	CUSHION, HEADREST	1
11	95.08	WASHER, FLAT 1/2 SAE	12
12	90.0810	BOLT, 1/2-13 USS X 1-1/4	4
13	06.0065-6IN	VELCRO, LOOP 1" BLACK X 6"	3
14	47.0280	SEAT BELT, 4 POINT	1
15	64.1490	MOUNT, SEATBELT UPPER	1

# PARTS

## ILLUSTRATED DRAWING Fuel Tank Cover, Frame Seals, Decals



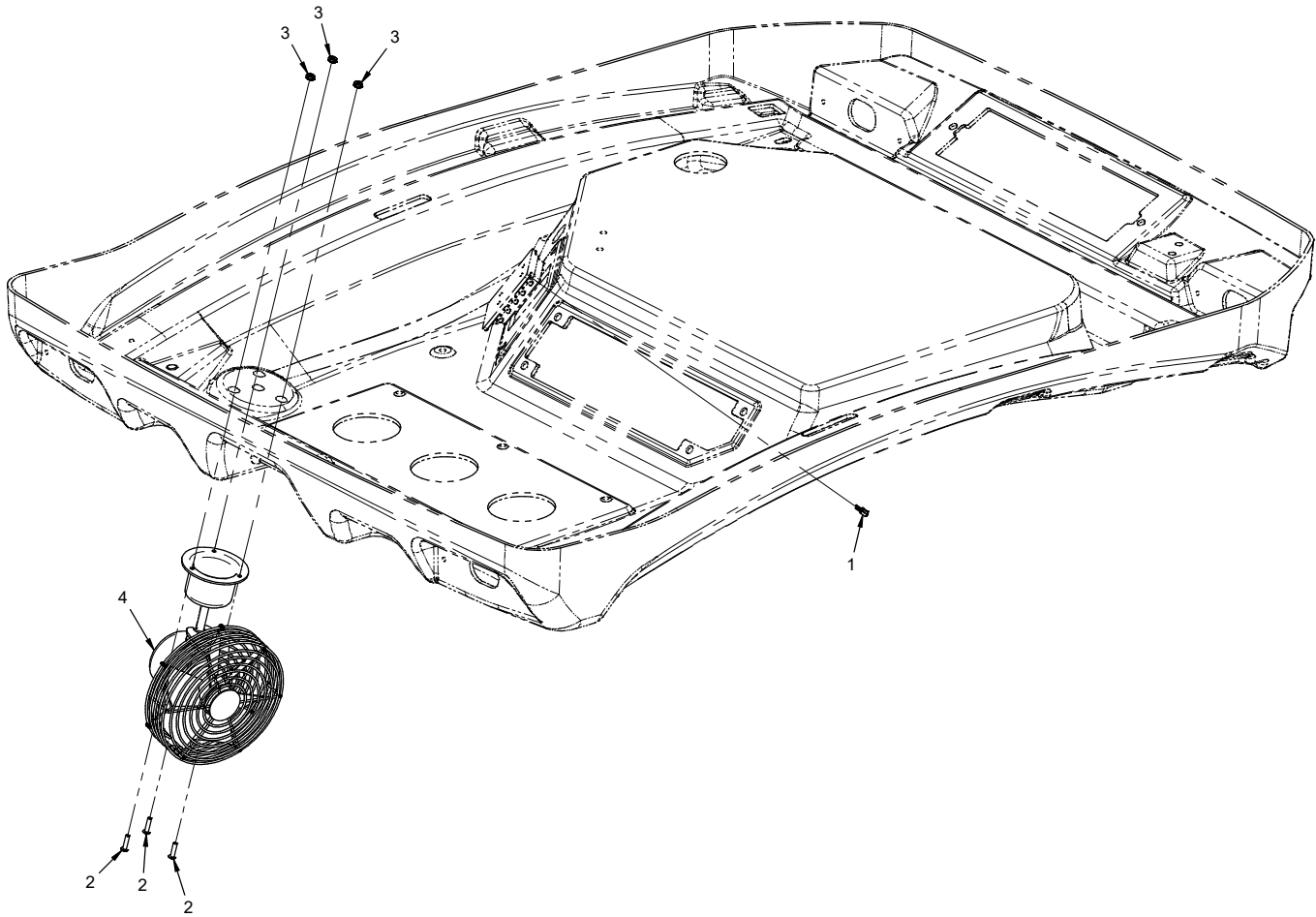
# PARTS

## Fuel Tank Cover, Frame Seals, Decals

REF.	PART NO.	DESCRIPTION	QTY.
1	99.SF04	.NUT, SRF 1/4-20 USS	4
2	99.0404	.BOLT, 1/4-20 X 1/2 BSCS	4
3	04.0029	.RIVET, POP 1/8" X 1/4"	2
4	06.0064-20IN	.WEATHERSTRIP, 1 X1 D-SHAPE X 20"L	1
5	06.0064-14IN	.WEATHERSTRIP, 1 X1 D-SHAPE X 14"L	1
6	N/A	.PLATE, VENTRAC SERIAL NUMBER	1
7	06.0043-7.5IN	.TRIM, TRIM SEAL W/BULB X 7-1/2"	1
8	00.0218	.DECAL, WARNING PINCH POINT	2
9	60.1177	.COVER, FUEL TANK KW450	1
10	00.0420	.DECAL, WARNING	1
11	00.0100	.DECAL, MADE IN USA	1
12	06.0065-8IN	.VELCRO, LOOP 1" BLACK X 8"	2
13	06.0071-16IN	.VELCRO, LOOP, 1/2" WIDE X 16"	1
14	06.0043-21.5IN	.TRIM, TRIM SEAL W/BULB X 21-1/2"	1
15	00.0332	.DECAL, GASOLINE ONLY	1
16	00.0333	.DECAL, DIESEL ONLY	1
17	44.0327	.CANVAS, REAR FRAME	1
18	05.0060	.GROMMET, 1-1/8 ID, 1-3/4 OD	1

# PARTS

## ILLUSTRATED DRAWING 70.2006-6 Defrost Fan Kit



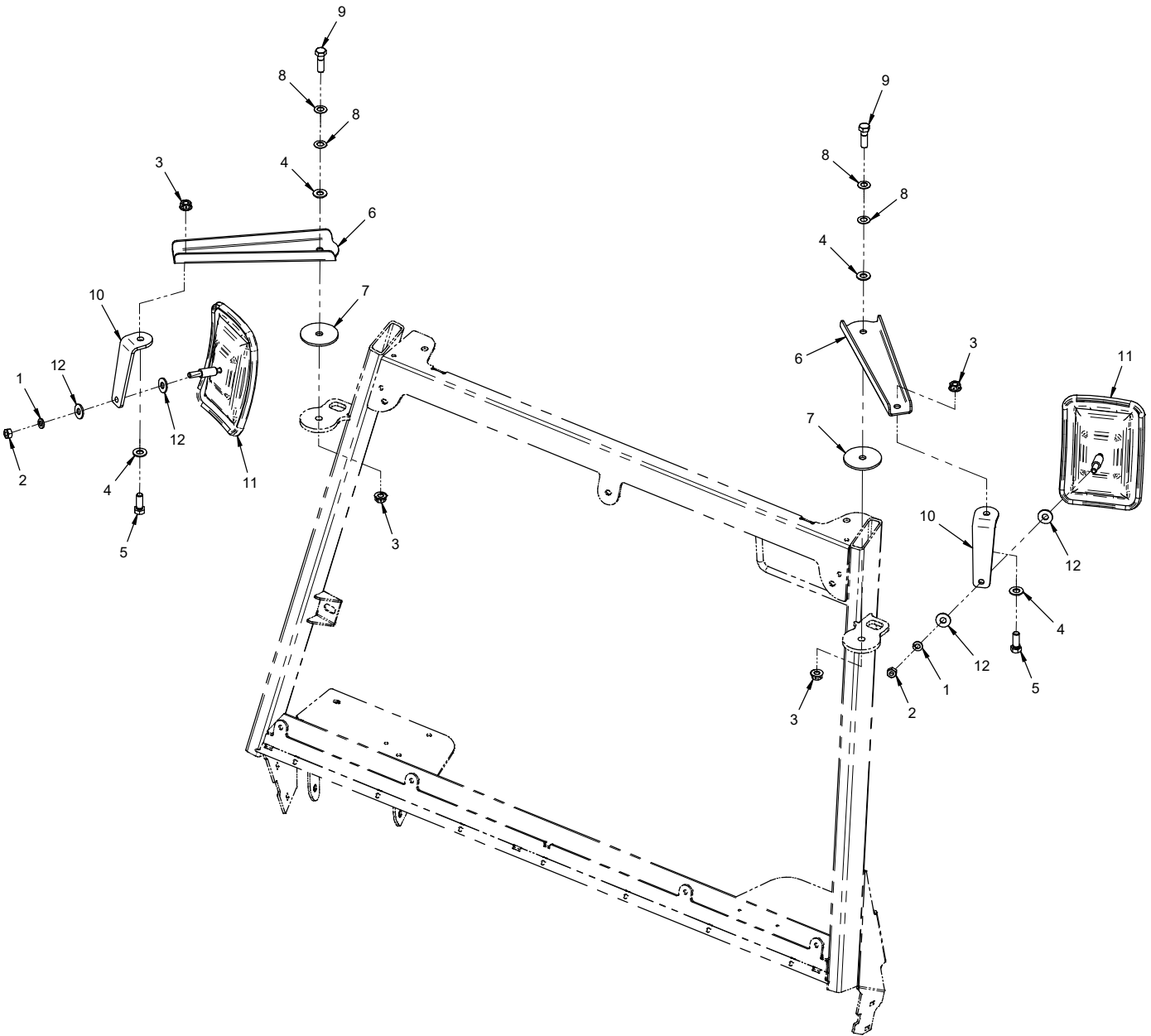
# PARTS

## 70.2006-6 Defrost Fan Kit

REF.	PART NO.	DESCRIPTION	QTY.
1	30.0317	FUSE, 10 AMP ATC BLADE - RED	1
2	99.K0047	MACHINE SCREW, #10-32 X 3/4.	3
3	99.E0049	NUT, WASHER #10-32 (STAR NUT)	3
4	37.0051	FAN, DEFROSTER	1

# PARTS

## ILLUSTRATED DRAWING 70.2006-4 Mirror Kit





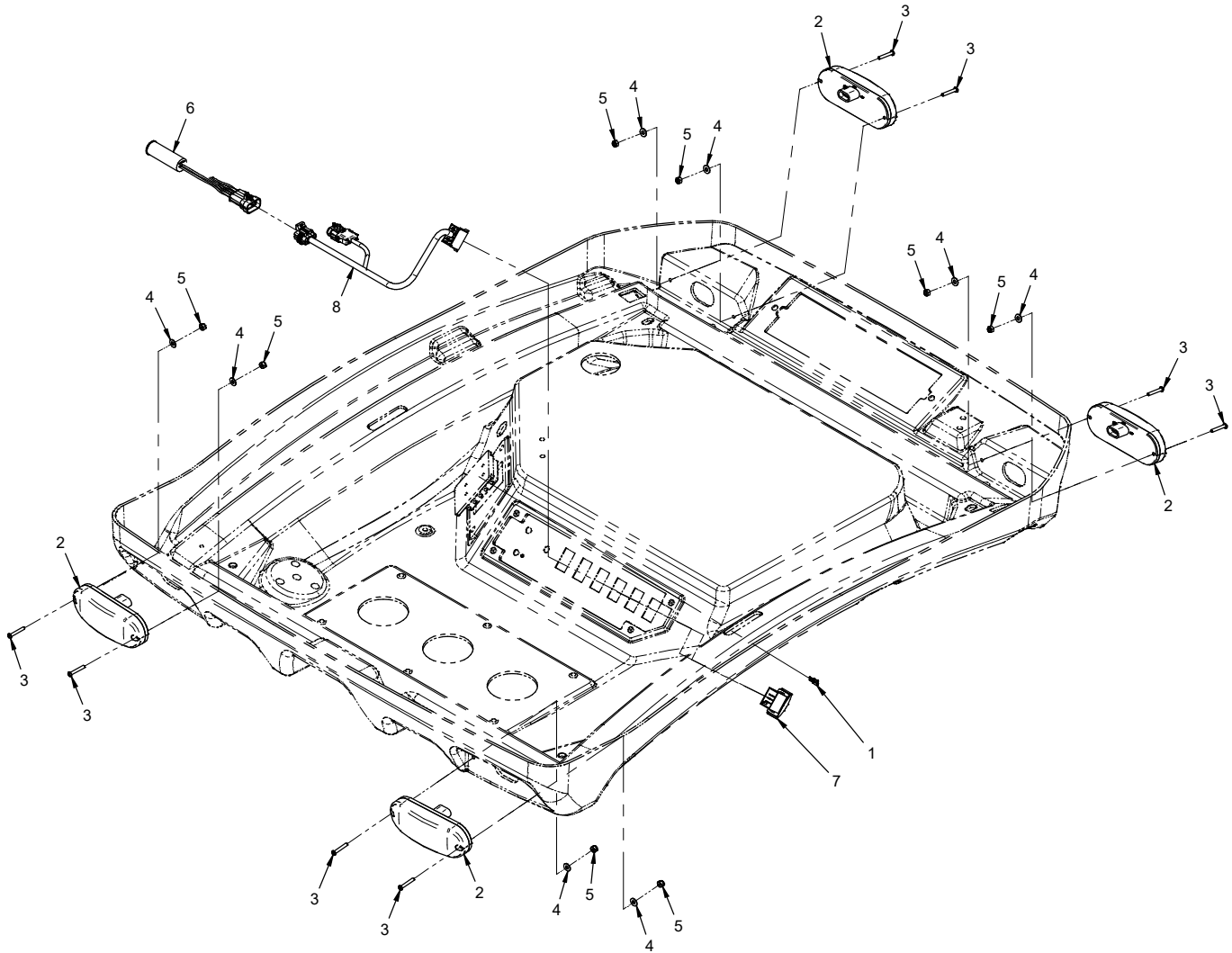
# PARTS

## 70.2006-4 Mirror Kit

REF.	PART NO.	DESCRIPTION	QTY.
1	96.05	WASHER, LOCK 5/16	2
2	99.M0025	NUT, M8 X 1.25MM	2
3	99.E0082	NUT, LOCKING FLANGE 3/8-16	4
4	95.06	WASHER, FLAT 3/8 SAE	4
5	90.0608	BOLT, 3/8-16 USS X 1	2
6	64.1496	BRACKET, MIRROR ARM	2
7	05.0002	WASHER, FRIC. 2-1/4 X 3/8	2
8	41.0099	SPRING, DISC 3/8 ID X 3/4 OD	4
9	90.0610	BOLT, 3/8-16 USS X 1-1/4	2
10	64.1497	BRACKET, MIRROR MOUNT	2
11	47.0290	MIRROR, CONVEX 5" X 7"	2
12	94.05	WASHER, FLAT 5/16 USS	4

# PARTS

## ILLUSTRATED DRAWING 70.8162 Cab Hazard Lights Kit



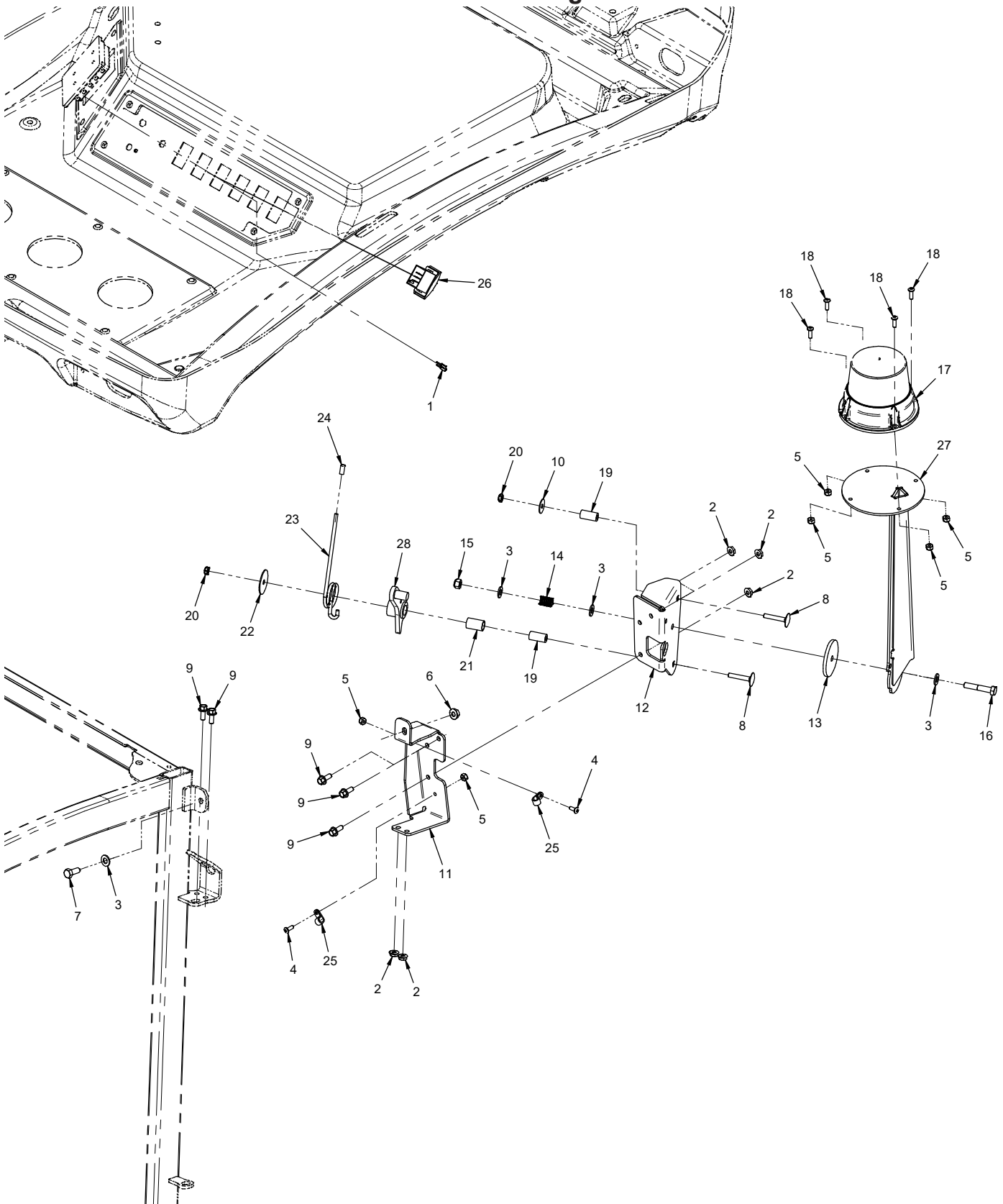
# PARTS

## 70.8162 Cab Hazard Lights Kit

REF.	PART NO.	DESCRIPTION	QTY.
1	30.0187	.FUSE, 5 AMP ATC BLADE - TAN	1
2	33.0070	.LIGHT, SIGNAL AMBER	4
3	99.K0144	.MACHINE SCREW, #10-32 X 1-1/4	8
4	99.B0051	.WASHER, FLAT #10	8
5	99.A1032N	.LOCKNUT, NYLON 10-32 STAINLESS	8
6	35.0127	.MODULE, DIRECTIONAL LIGHT	1
7	31.0053	.SWITCH, ROCKER ON/OFF	1
8	32.0176	.HARNESS, WIRE HAZARD	1

# PARTS

## ILLUSTRATED DRAWING 70.8161 Strobe Light Kit



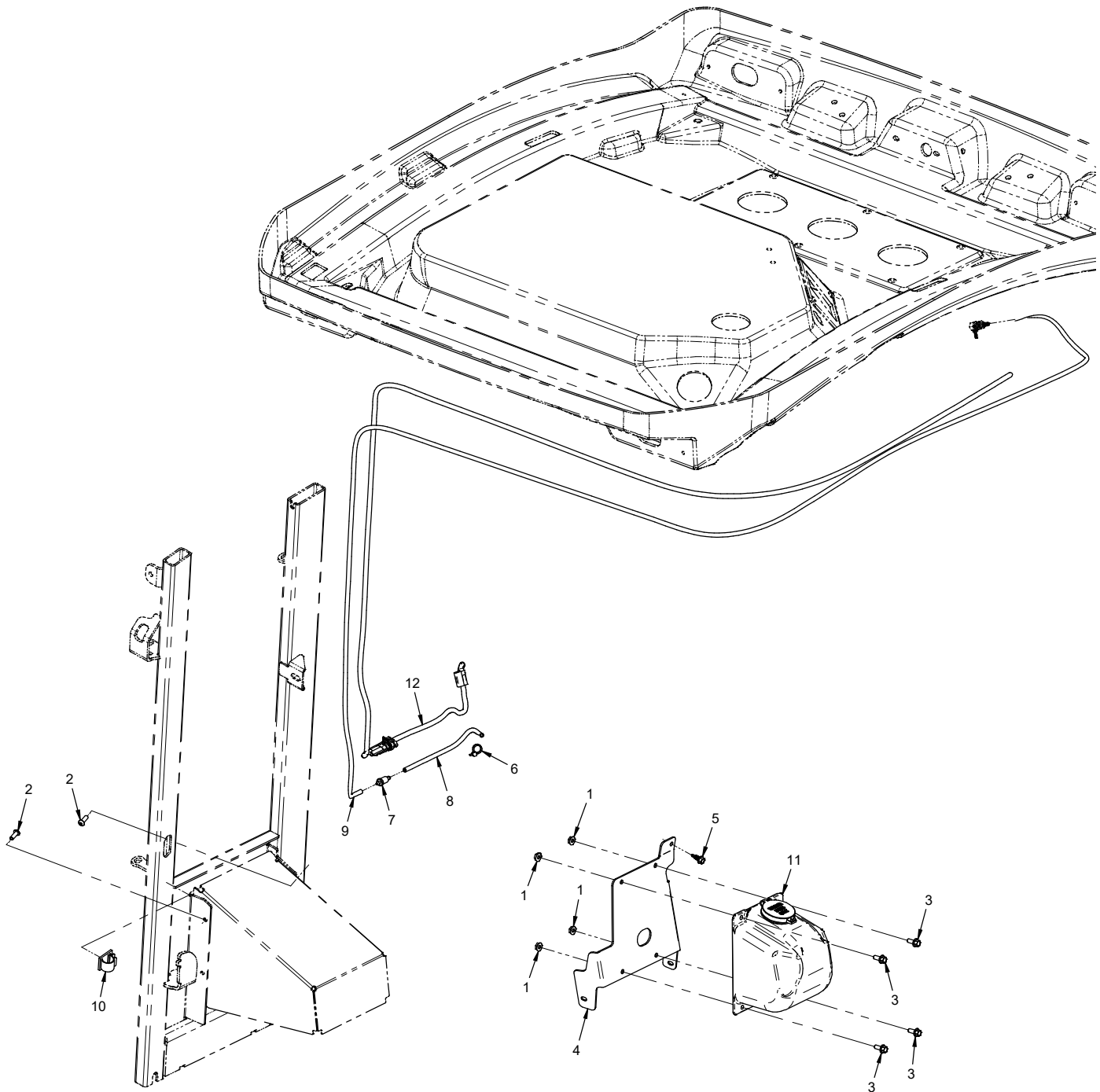
# PARTS

## 70.8161 Strobe Light Kit

REF.	PART NO.	DESCRIPTION	QTY.
1	30.0187	.FUSE, 5 AMP ATC BLADE - TAN	1
2	99.SF04	.NUT, SRF 1/4-20 USS	5
3	95.05	.WASHER, FLAT 5/16 SAE	4
4	99.K0062	.MACHINE SCREW, #10-32 X 1/2	2
5	99.A1032N	.LOCKNUT, NYLON 10-32 STAINLESS	6
6	99.SF05	.NUT, SRF 5/16-18 USS	1
7	90.0506	.BOLT, 5/16-18 USS X 3/4"	1
8	99.K0119	.BOLT, STEP 1/4-20 X 1-1/2 BLK	2
9	99.SF0405-1	.BOLT, SMF 1/4-20 X 5/8	5
10	99.B0100	.WASHER, FENDER 1/4 X 7/8 OD ZP	1
11	64.1949	.BRACKET, STROBE MOUNT KW452	1
12	64.1946	.BRACKET, STROBE PIVOT / LATCH	1
13	05.0167	.WASHER, FRIC. 2.25X0.34X3/16T	1
14	41.0108	.SPRING, COMP. .531 OD X .780 LG.	1
15	99.A05N	.LOCKNUT, NYLON 5/16-18 USS	1
16	90.0514	.BOLT, 5/16-18 USS X 1-3/4"	1
17	33.0073	.LIGHT, STROBE AMBER	1
18	99.K0071	.MACHINE SCREW, #10-32 X 5/8	4
19	64.1948	.BUSHING, SPRING ARM	2
20	99.A04	.LOCKNUT, STOVER 1/4-20 USS	2
21	85.B0062	.BUSHING, 1/2 ID X 5/8 OD X 1	1
22	99.B0115	.WASHER, FENDER 1/4 X 1-1/2	1
23	41.0083-1	.SPRING, TORSION RH 1-3/16X5.18	1
24	06.0083	.CAP, VINYL 3/16" ID X 1/2	1
25	30.0143	.CLAMP, WIRE MT 5/16 NYLON WHT	2
26	31.0053	.SWITCH, ROCKER ON/OFF	1
27	62.1469	.FRAME, STROBE PIVOT ARM	1
28	40.0402	.ARM, SPRING LATCH	1

# PARTS

## ILLUSTRATED DRAWING 70.8148 Windshield Washer Kit



# PARTS

## 70.8148 Windshield Washer Kit

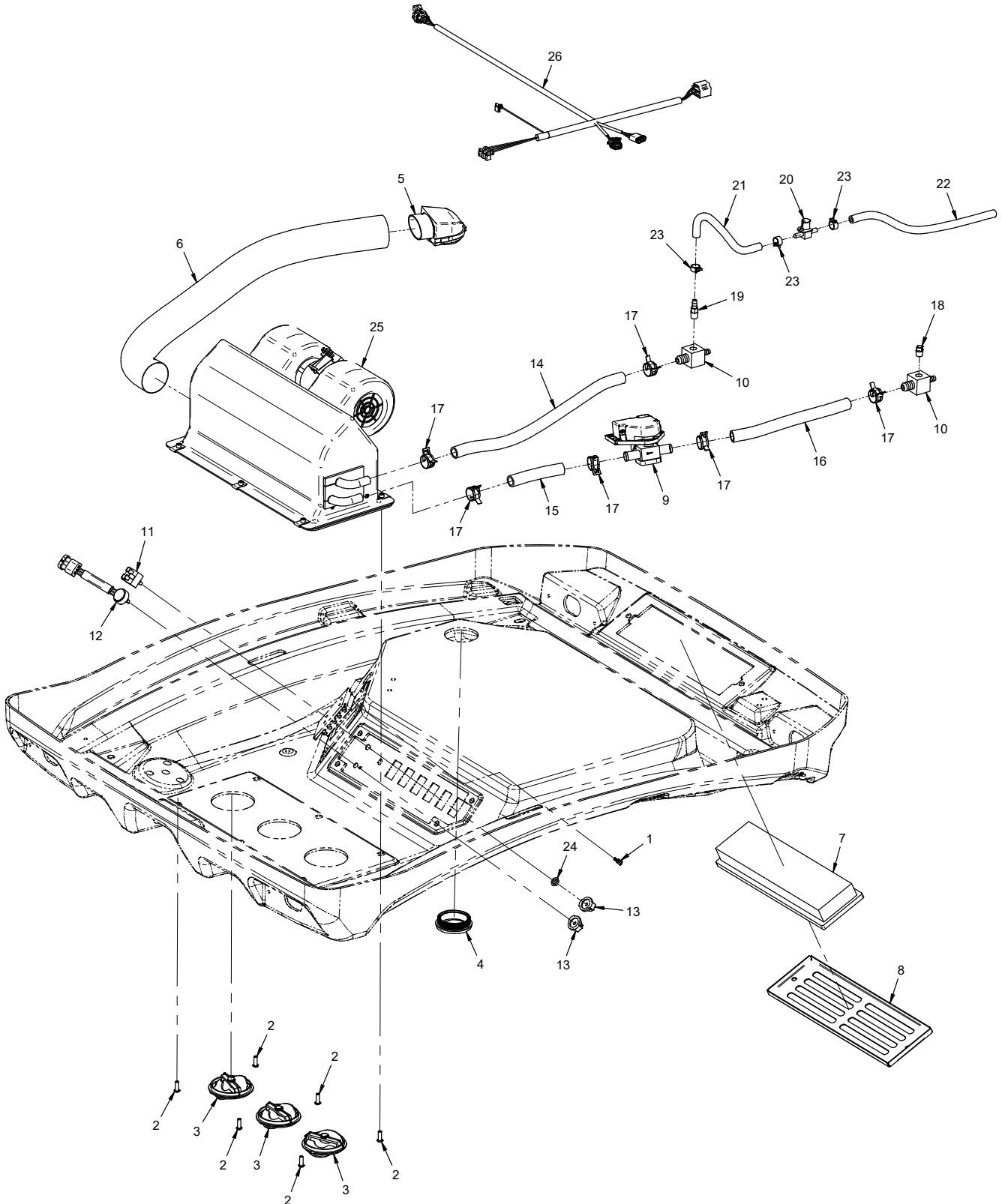
REF.	PART NO.	DESCRIPTION	QTY.
1	99.SF04	.NUT, SRF 1/4-20 USS	4
2	99.0406	.BOLT, 1/4-20 X 3/4 BSCS	2
3	99.SF0405-1	.BOLT, SMF 1/4-20 X 5/8	4
4	64.1954	.MOUNT, WINDSHIELD WASHER TANK	1
5	99.K0141	.SCREW, SELF DRILLING 1/4 X 3/4	1
6	30.0037	.TYTON TIE, #50 .18 X 8 BLACK	4
7	23.0169	.VALVE, CHECK 5/32" INLINE	1
8	27.0003	.TUBING, WINDSHIELD WASHER X 1'	1
9	27.0002	.TUBING, WINDSHIELD WASHER X 12'	1
10	30.0498	.CLAMP, WIRE MT ADH. 3/4" GRAY	1
11	47.0382	.RESERVOIR, WINDSHIELD WASHER	1
12	32.0175	.HARNES, WIRE WINDSHLD WASHER.	1

# PARTS

## ILLUSTRATED DRAWING

### 70.8160 Console Fan/Heater Kit

(Cabs with serial # 01287 and higher include the heater as standard equipment)





# PARTS

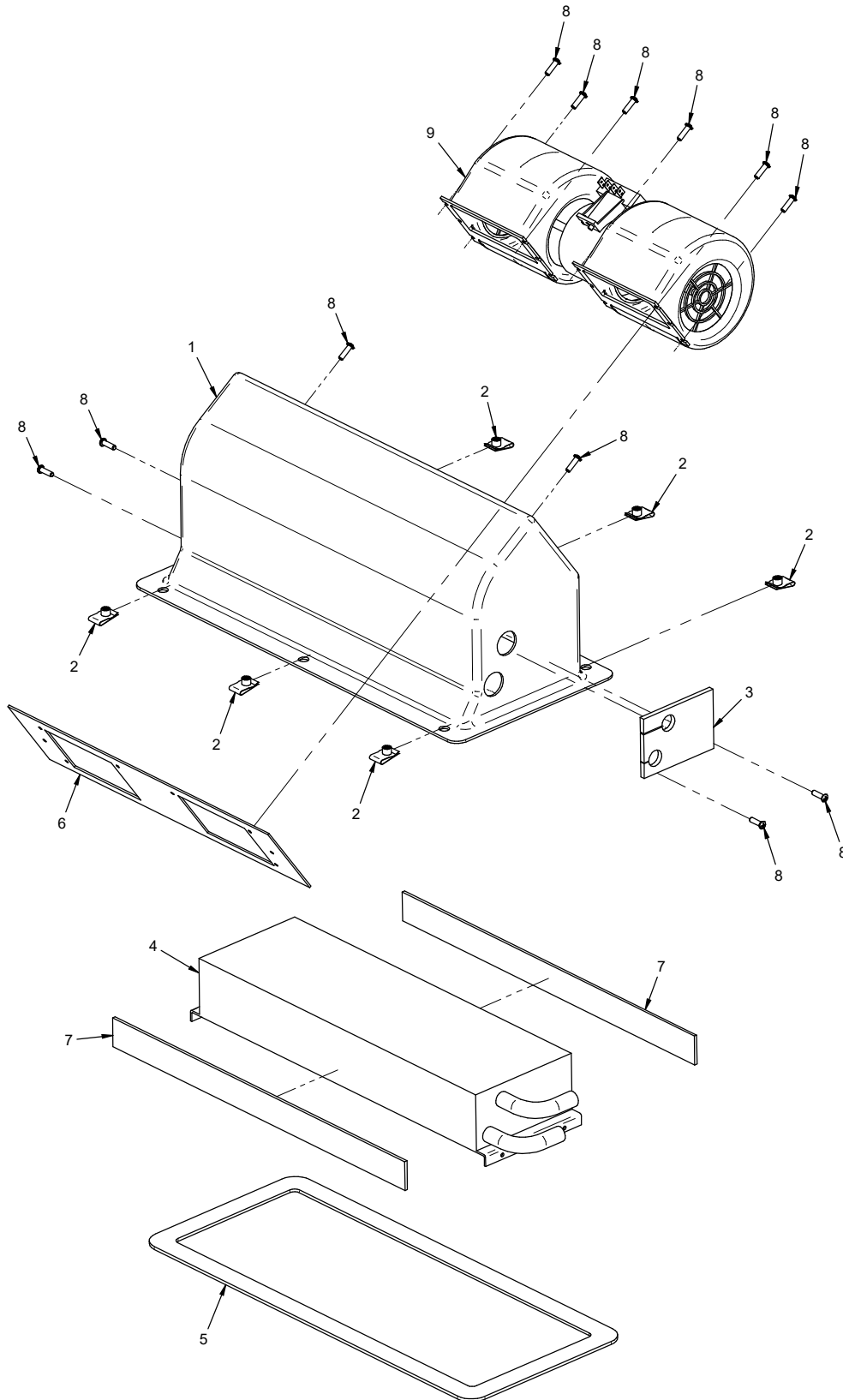
## 70.8160 Console Fan/Heater Kit

(Cabs with serial # 01287 and higher include the heater as standard equipment)

REF.	PART NO.	DESCRIPTION	QTY.
1	30.0317	.FUSE, 10 AMP ATC BLADE - RED	1
2	99.0406	.BOLT, 1/4-20 X 3/4 BSCS	6
3	47.0380	.VENT, LOUVER 3"	3
4	47.0390	.VENT, LOUVER 2-1/2"	1
5	47.0391	.DUCT, 90 DEG FOR 47.0390	1
6	47.0392	.DUCT, FLEXIBLE 2-1/2"	1
7	47.0383	.FILTER, AIR	1
8	47.0384	.RETAINER, AIR FILTER VENTED	1
9	47.0389	.VALVE, ELECTRONIC TEMP CONTROL	1
10	29.BF0610FP04	.FITTING, TEE 3/8 X 5/8 X 04NPT	2
11	31.0066	.SWITCH, FAN SPEED	1
12	31.0067	.SWITCH, TEMPERATURE	1
13	47.0386	.KNOB, FAN SPEED / TEMPERATURE	2
14	47.0405	.HOSE, HEATER 5/8 X 20" L	1
15	47.0404	.HOSE, HEATER 5/8 X 5" L	1
16	47.0406	.HOSE, HEATER 5/8 X 23" L	1
17	11.0079	.CLAMP, SPRING 5/8" HEATER HOSE	6
18	29.P04	.PIPE, PLUG 1/4" SQ	1
19	29.BF05MP04	.FITTING, 5/16 BARB X 1/4 MP ST	1
20	47.0328	.VALVE, FUEL SHUT OFF 5/16"	1
21	27.F05-6IN	.HOSE, FUEL LINE X 5/16 X 6"	1
22	27.F05-18IN	.HOSE, FUEL LINE X 5/16 X 18"	1
23	11.0048	.CLAMP, HOSE BAND 9/16" OD HOSE	3
24	99.E0121	.NUT, PANEL 7/16-28 UNEF	1
25	N/A	.HEATER, BLOWER ASSEMBLY	1
26	32.0174	.HARNES, WIRE HEATER KIT	1

# PARTS

## ILLUSTRATED DRAWING Heater Blower Assembly



# PARTS

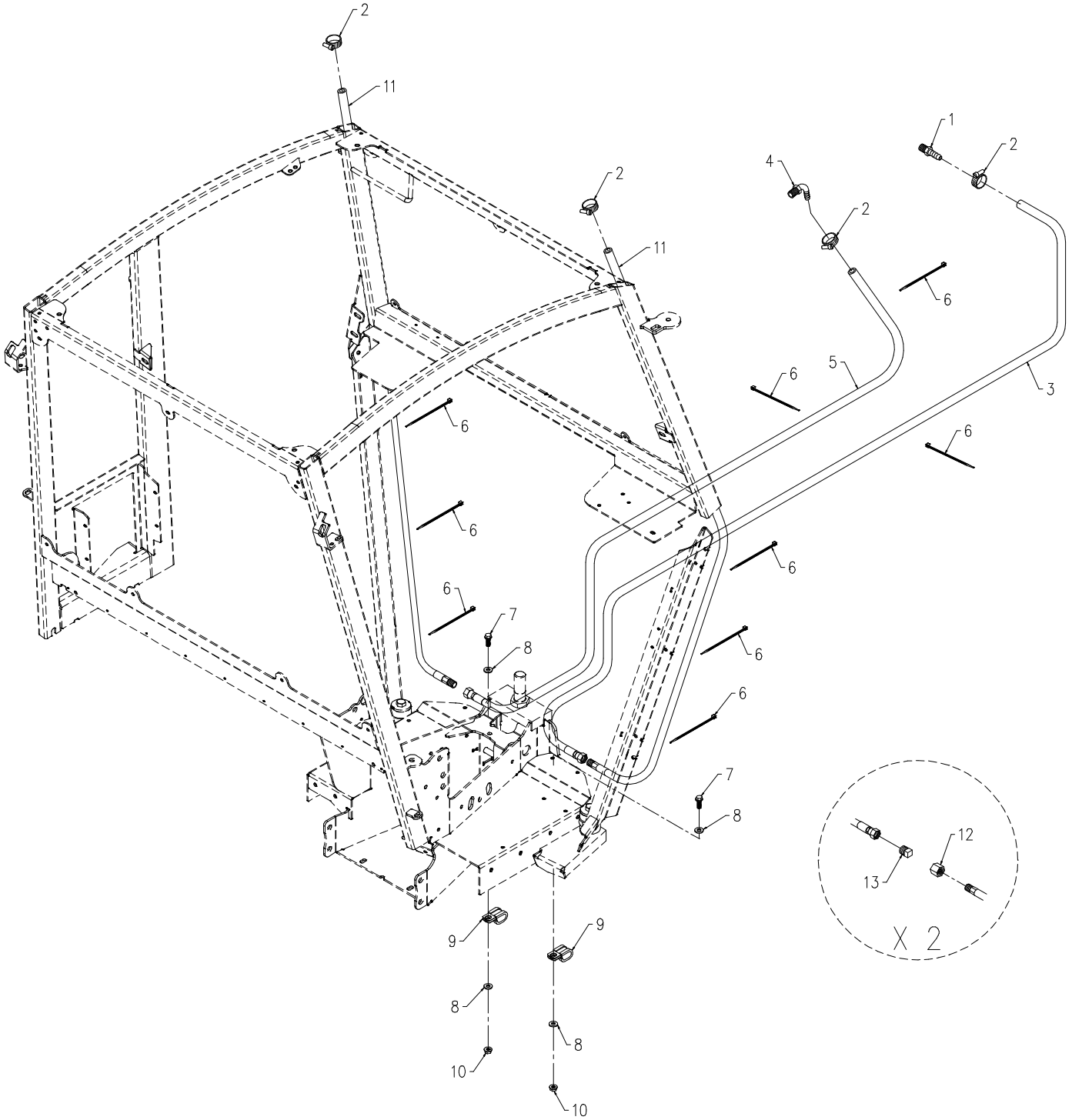
## Heater Blower Assembly

REF.	PART NO.	DESCRIPTION	QTY.
1	47.0407	.HOUSING, HEATER	1
2	99.E0046	.NUT, "U" 1/4-20 EXTRUDED	6
3	44.0386	.FOAM, COIL SEAL	1
4	47.0387	.CORE, HEATER	1
5	44.0366	.GASKET, BLOWER HOUSING	1
6	47.0408	.PLATE, BLOWER BRACKET	1
7	44.0387	.FOAM, HEATER CORE SEAL	2
8	99.K0147	.SCREW, #8 X 5/8 FOR PLASTIC	12
9	47.0394	.BLOWER, HEATER	1

# PARTS

## ILLUSTRATED DRAWING

### 70.8136 Kubota Heater Install Kit for 4500Y & 4500Z



# PARTS

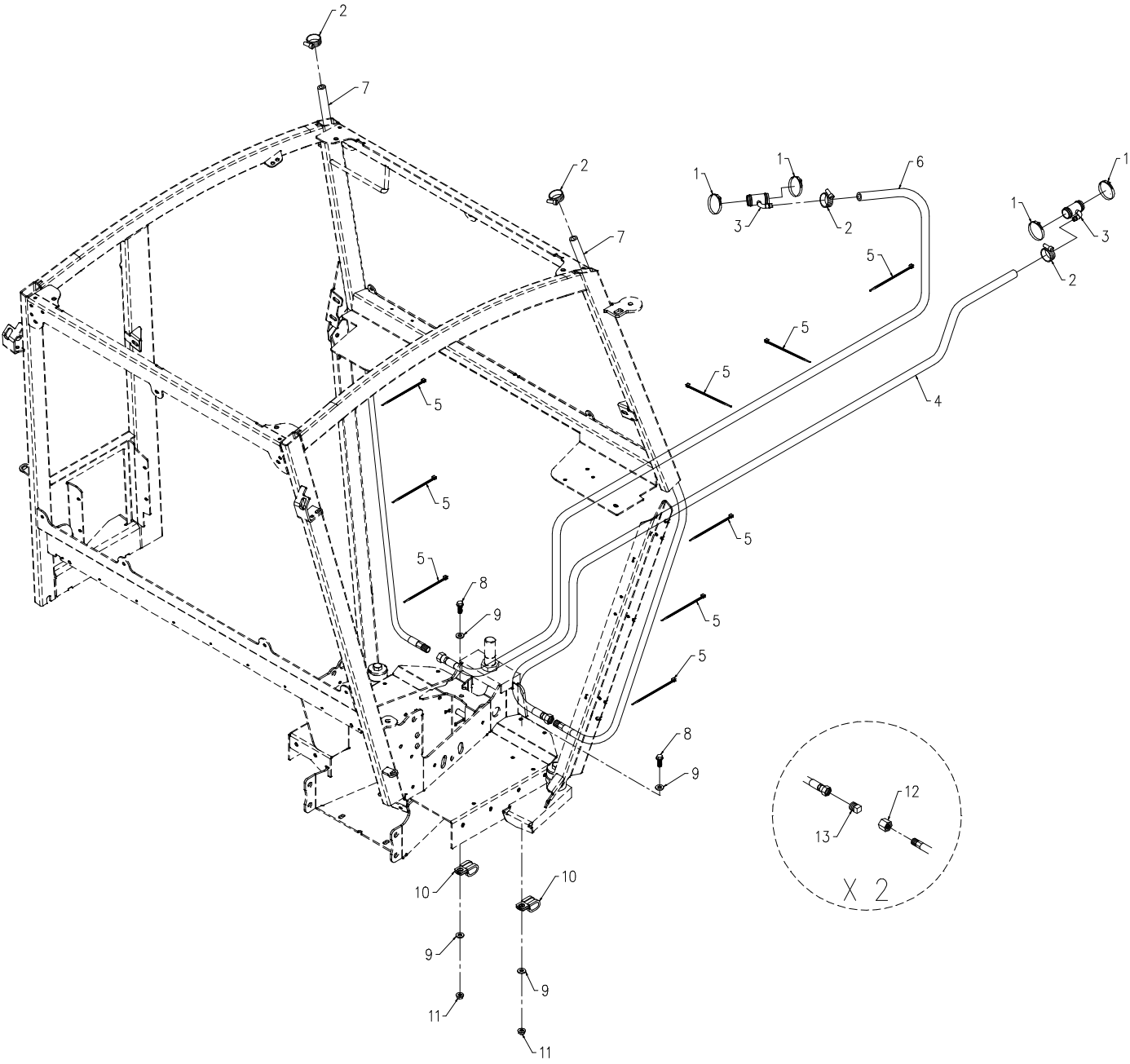
## 70.8136 Kubota Heater Install Kit for 4500Y & 4500Z

REF.	PART NO.	DESCRIPTION	QTY.
1	29.BF06MBSPT06	.FITTING, 3/8 BRB X 3/8 M BSPT	1
2	11.0032	.CLAMP, HOSE SS 7/16 TO 25/32	4
3	22.0064	.HOSE, 3/8x45.00 HTR SAE J20R3	1
4	29.BF06MP0490	.FITTING, 3/8 BARB X 1/4 MP 90	1
5	22.0065	.HOSE, 3/8x28.50 HTR SAE J20R3	1
6	30.0037	.TYTON TIE, #50 .18 X 8 BLACK	10
7	99.SF0406	.BOLT, SRF 1/4-20 X 3/4	2
8	94.04	.WASHER, FLAT 1/4 USS	4
9	11.0046	.CLAMP, CUSHIONED 1/2" 2-TUBE	2
10	99.SF04	.NUT, SRF 1/4-20 USS	2
11	22.0045	.HOSE, 3/8x94.00 HTR SAE J20R3	2
12	25.304-C-06 <sup>^</sup>	.FITTING, CAP 3/8 #6 JIC	2
13	25.2408-06 <sup>^</sup>	.FITTING, PLUG -6 MJIC	2

<sup>^</sup>These fittings are used to plug the hoses when the cab is removed from the power unit.

# PARTS

## ILLUSTRATED DRAWING 70.8137 Kawasaki Heater Install Kit for 4500P



# PARTS

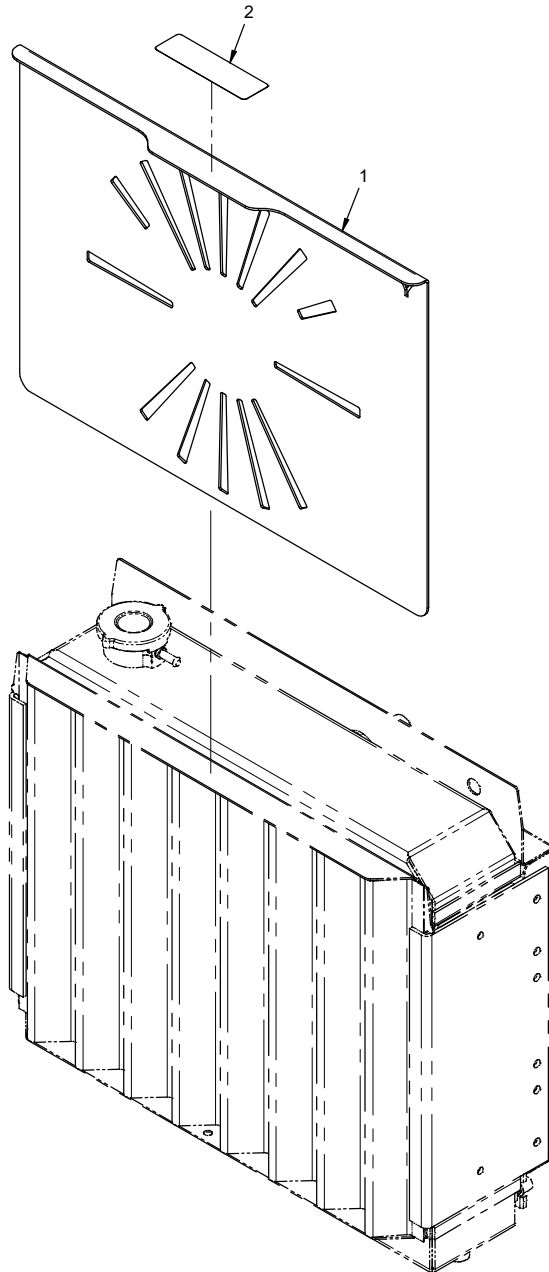
## 70.8137 Kawasaki Heater Install Kit for 4500P

REF.	PART NO.	DESCRIPTION	QTY.
1	11.0052	.CLAMP, HOSE SS 13/16 TO 1-1/2	4
2	11.0032	.CLAMP, HOSE SS 7/16 TO 25/32	4
3	47.0293	.TUBE, KAW. RAD. W/HEATER PORT	2
4	22.0048	.HOSE, 3/8x38.00 HTR SAE J20R3	1
5	30.0037	.TYTON TIE, #50 .18 X 8 BLACK	10
6	22.0046	.HOSE, 3/8x50.00 HTR SAE J20R3	1
7	22.0045	.HOSE, 3/8x94.00 HTR SAE J20R3	2
8	99.SF0406	.BOLT, SRF 1/4-20 X 3/4	2
9	94.04	.WASHER, FLAT 1/4 USS	4
10	11.0046	.CLAMP, CUSHIONED 1/2" 2-TUBE	2
11	99.SF04	.NUT, SRF 1/4-20 USS	2
12	25.304-C-06 <sup>^</sup>	.FITTING, CAP 3/8 #6 JIC	2
13	25.2408-06 <sup>^</sup>	.FITTING, PLUG -6 MJIC	2

<sup>^</sup>These fittings are used to plug the hoses when the cab is removed from the power unit.

# PARTS

## ILLUSTRATED DRAWING 70.4146 Radiator Baffle 4500Y Kit





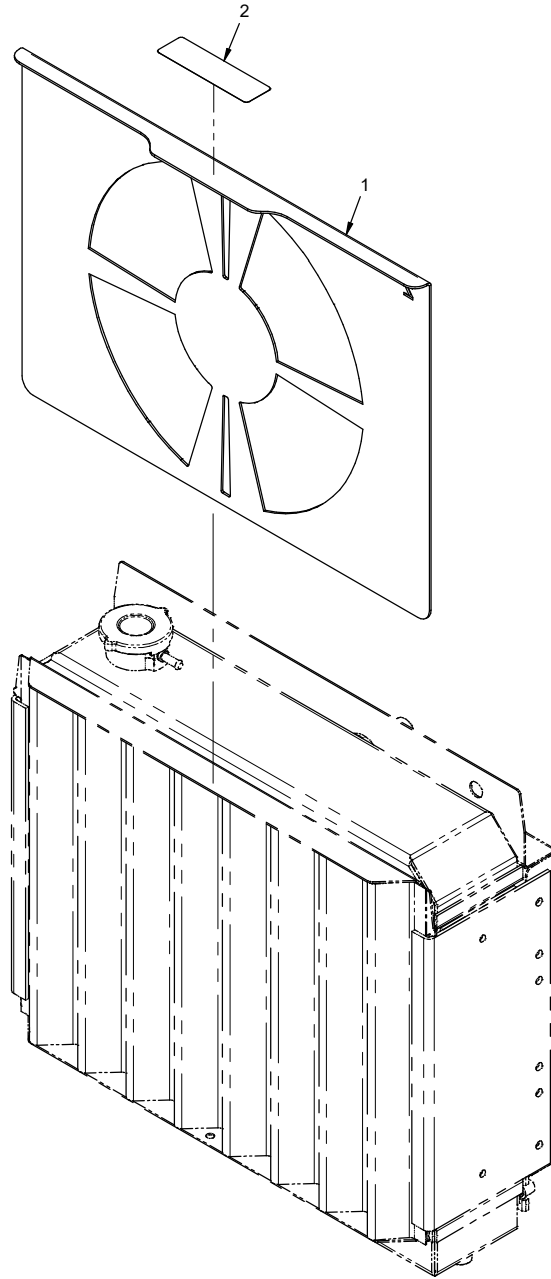
# PARTS

## 70.4146 Radiator Baffle 4500Y Kit

REF.	PART NO.	DESCRIPTION	QTY.
1	70.4146	.KIT, RADIATOR BAFFLE 4500Y	1
2	00.0422	.DECAL, CAUTION 4500Y	1

# PARTS

## ILLUSTRATED DRAWING 70.4147 Radiator Baffle 4500Z Kit



# PARTS

## 70.4147 Radiator Baffle 4500Z Kit

REF.	PART NO.	DESCRIPTION	QTY.
1	70.4147	.KIT, RADIATOR BAFFLE 4500Z	1
2	00.0423	.DECAL, CAUTION 4500Z	1